

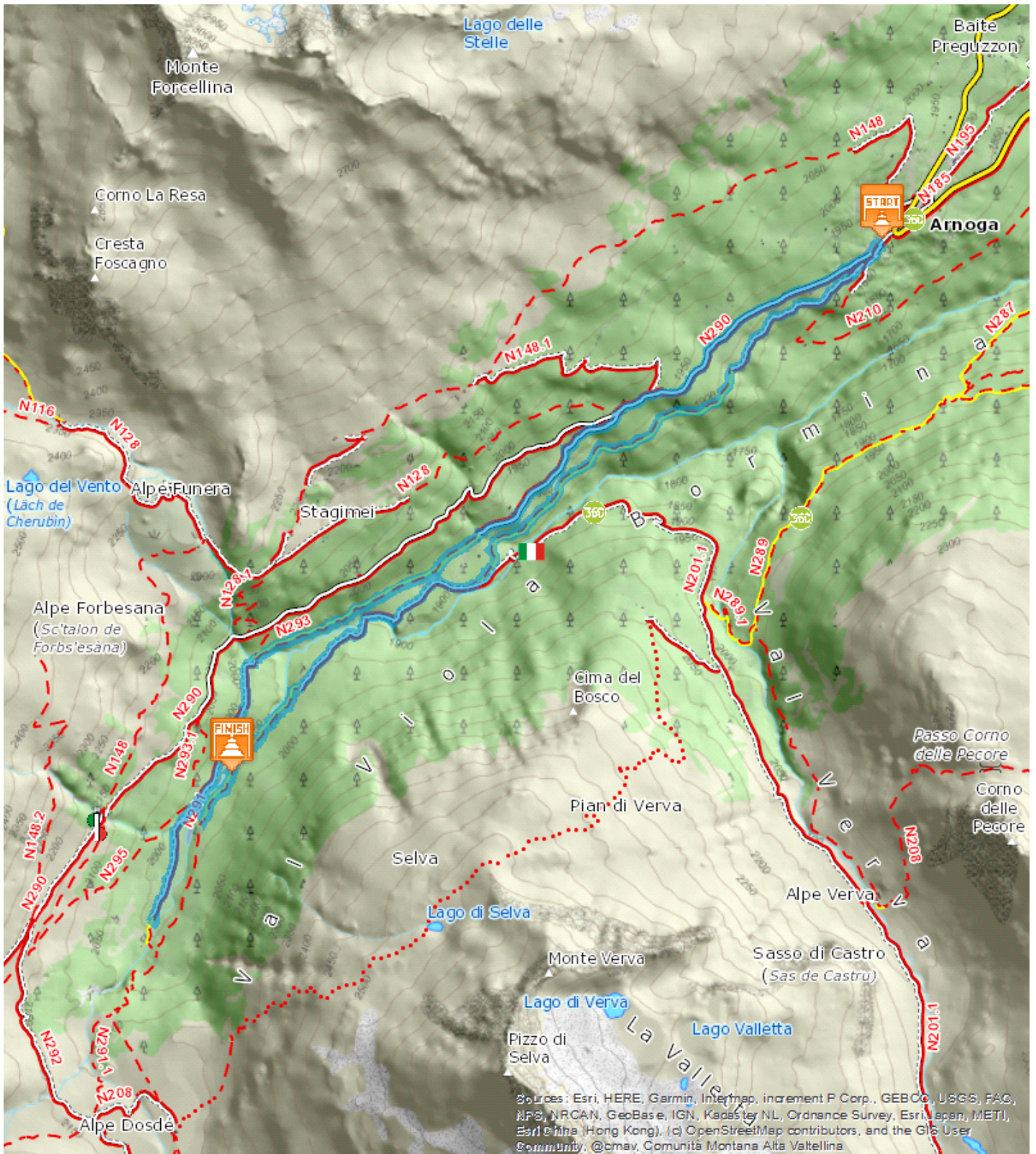


16,897 Km

04:36 h

380 m

293 m



© Sources: Esri, HERE, Garmin, Intermap, increment P Corp., GEBCO, USGS, FAO, NPS, NRCAN, GeoBase, IGN, Kadaster NL, Ordnance Survey, Esri Japan, METI, Esri China (Hong Kong), (c) OpenStreetMap contributors, and the GIS User Community, @cmav, Comunità Montana Alta Valtellina



Start: Arnoga

Arrival: Rifugio Caricc

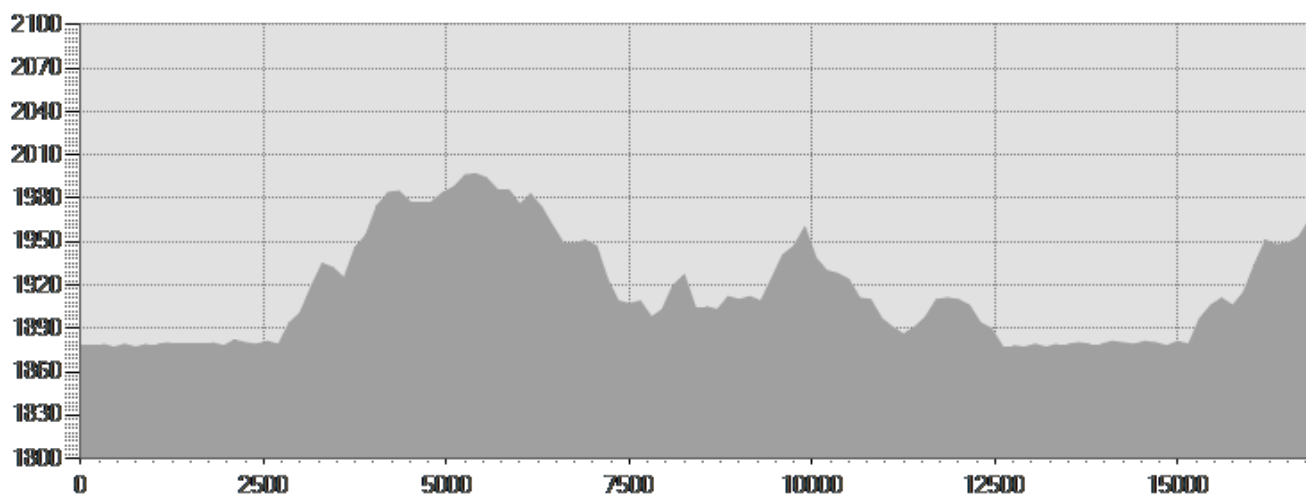
Equipment required:

Difficulty description:

Parking Area: Arnoga

Map:

Author:



TECHNICAL DATA

Length	— 16,897 Km	Skill	—
Duration	🕒 04:36 h	Condition	—
Uphill height difference	📈 380 m	Effort	—
height difference downhill	📉 293 m	Natural pavement	75%
Maximum slope uphill	📈 14%	Asphalt pavement	25%
Maximum slope downhill	📉 15%	Cobblestones	0%
Minimum and maximum quota	📊 1998 m	Equipped trail	0%
	1877 m	Scree pavement	0%
Accessibility for bikes	100%	Other types of pavements	0%
Period Journey	Giugno - Settembre	Not available data	0%

This publication is for information purposes only. We recommend you consult and check the weather forecast and snow conditions before every excursion.