


Punta San Matteo - dal Gavia


Rifugio Berni, Ghiacciaio Dosegu', Punta San Matteo.

Hard

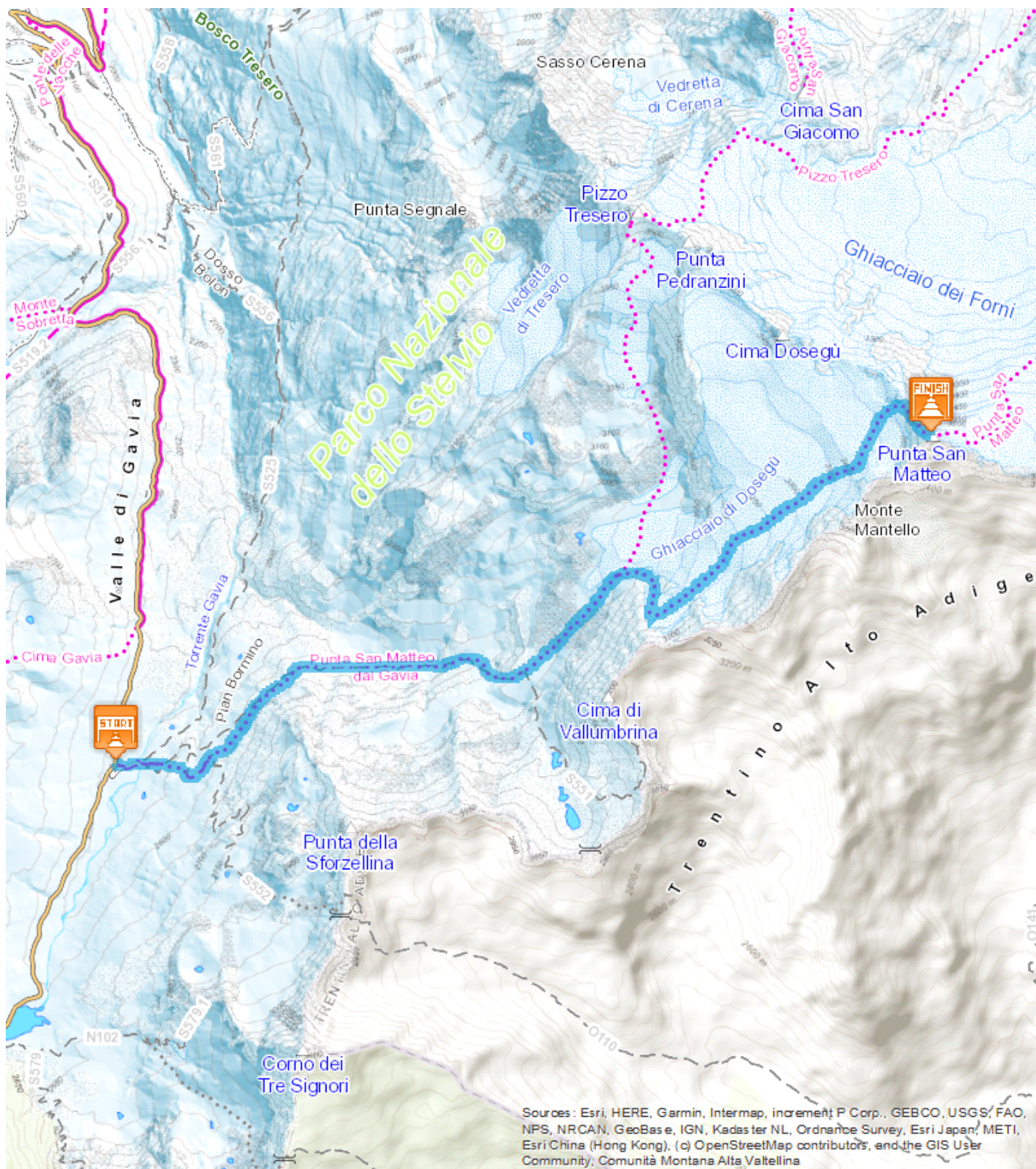


6,977 Km

 3:00 - 4:00
h

 1228 m

 99 m





Start:Rifugio Berni

Arrival:Punta San Matteo

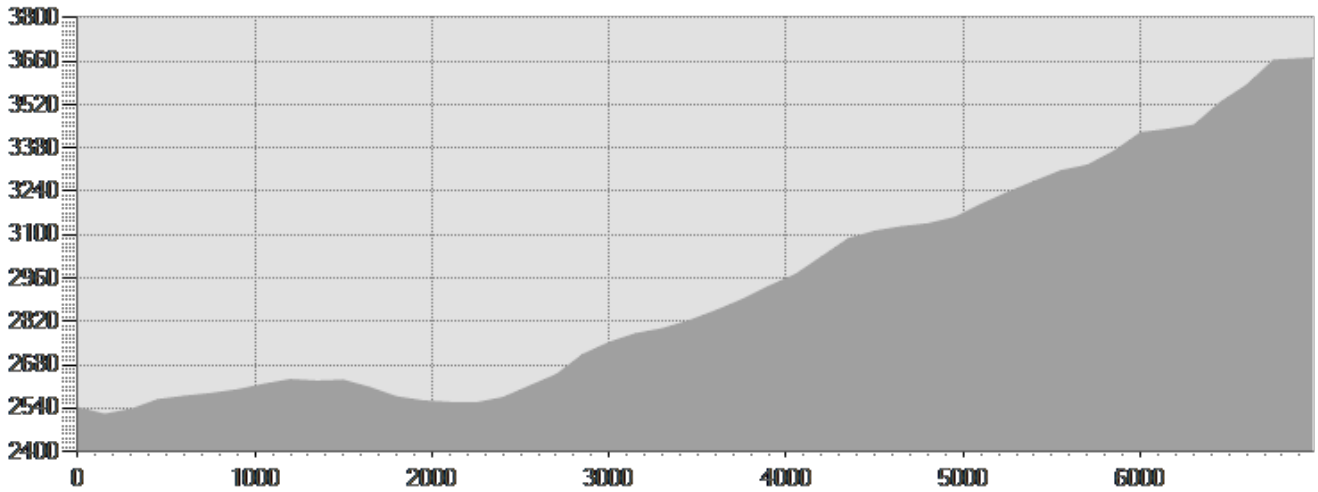
Equipment required:

Difficulty description:

Parking Area:In prossimita del rifugio.

Map:Mappa Comunita Montana Alta Valtellina Tav. 4

Author:Guida Alpina Eraldo Meraldi



TECHNICAL DATA


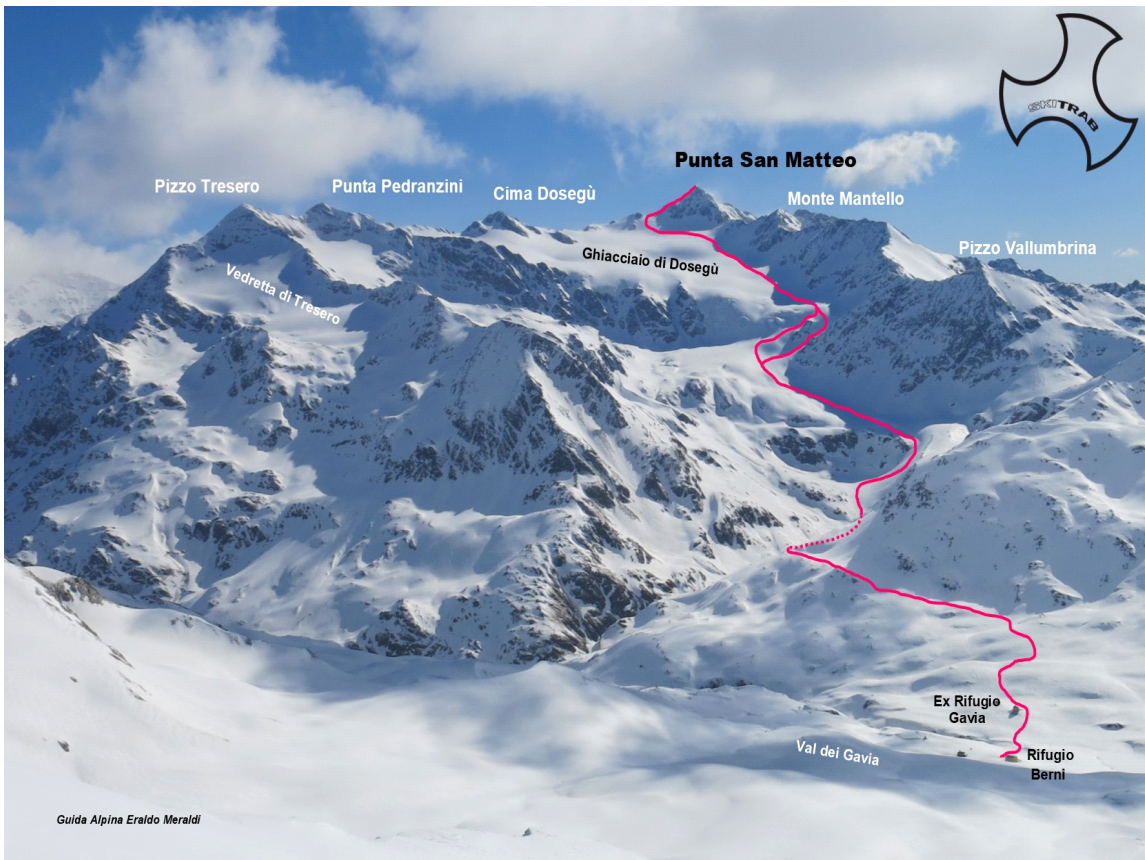
Length	— 6,977 Km	Skill	☆☆☆☆☆
Duration	☀ 3:00 - 4:00 h	Condition	☆☆☆☆☆
Uphill height difference	↗ 1228 m	Effort	☆☆☆☆☆
height difference downhill	↘ 99 m		
Maximum slope uphill	↗ 53%		
Maximum slope downhill	↘ 20%		
Minimum and maximum quota	 3671 m 2520 m		
Period Journey	Dicembre - Giugno		

PHOTO GALLERY



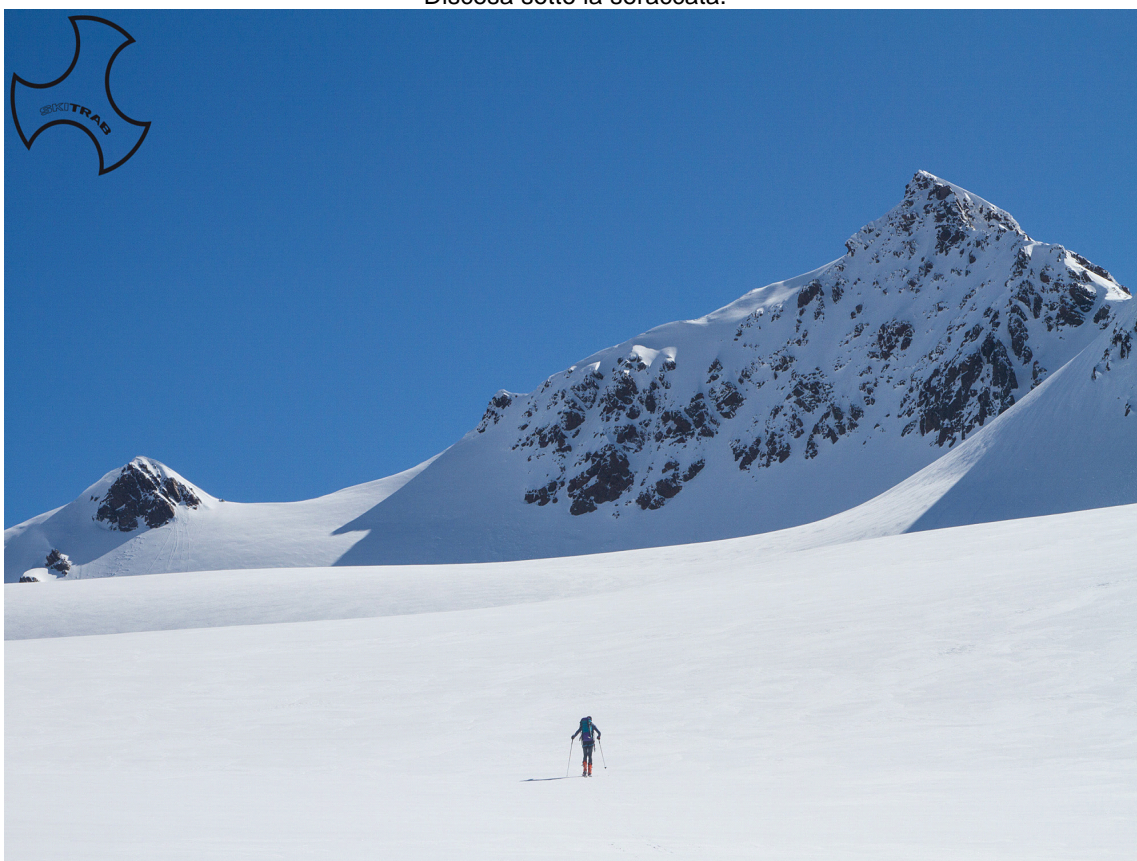
Itinerario.



In salita sul ghiacciaio.



Discesa sotto la seraccata.



Verso la cima.

This publication is for information purposes only. We recommend you consult and check the weather forecast and snow conditions before every excursion.