



Rifugio Branca con joelette

Valtellina
Outdoor

Easy



2,738 Km



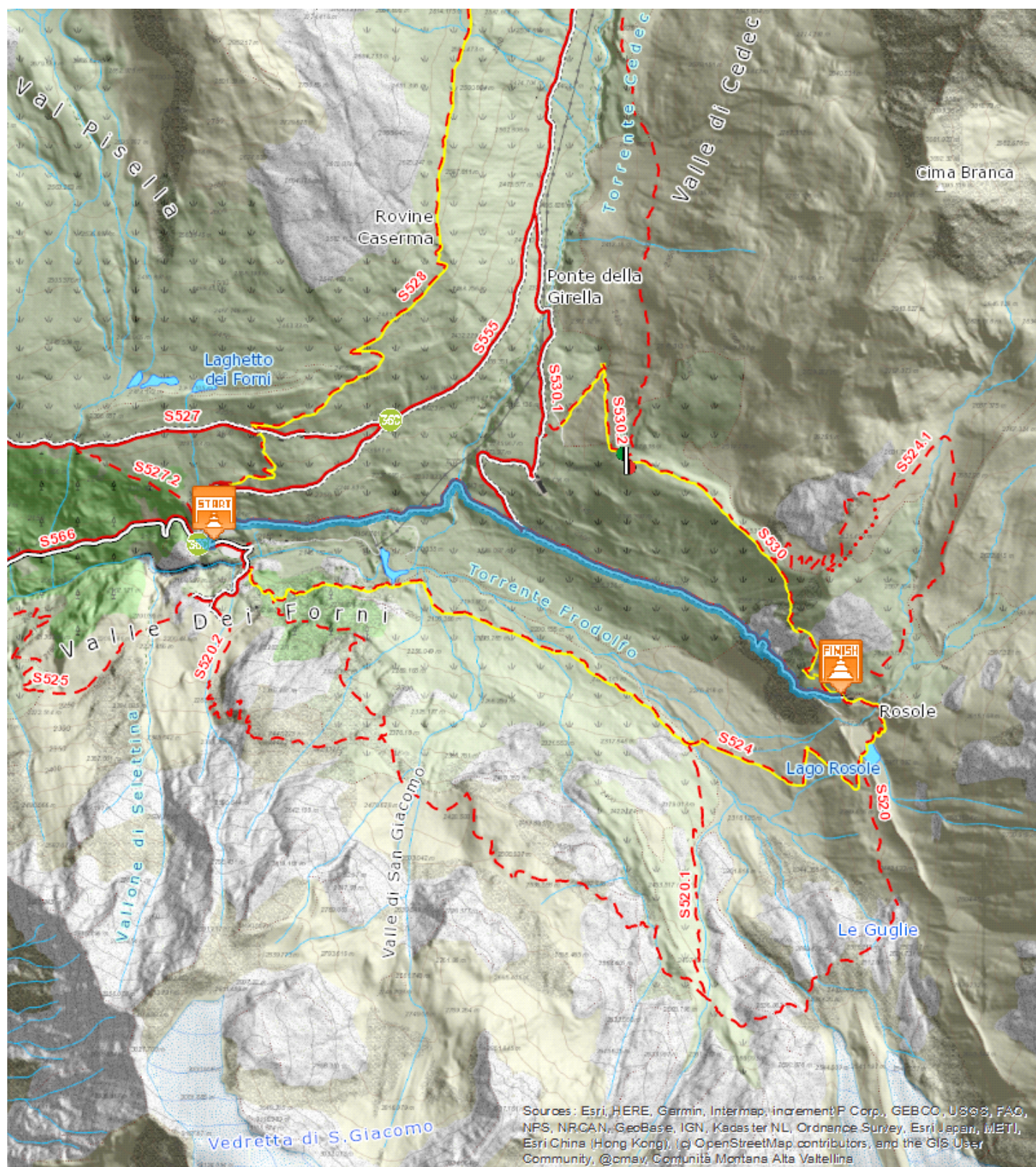
1:00 - 2:00
h



333 m



5 m



Sources: Esri, HERE, Garmin, Intermap, increment P Corp., GEBCO, USGS, FAO, NPS, NRCAN, GeoBase, IGN, Kadaster NL, Ordnance Survey, Esri Japan, METI, Esri China (Hong Kong), Swisstopo, Mapbox Contributors, and the GIS User Community, @cmav, Comunità Montana Alta Valtellina



Start: Arrival:

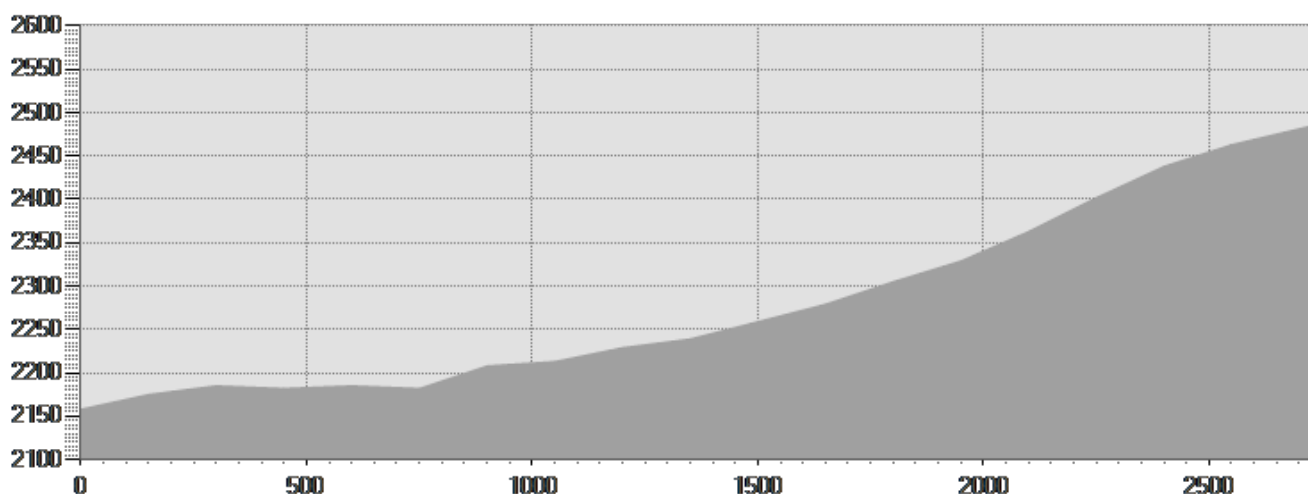
Equipment required:

Difficulty description:

Parking Area:

Map:

Author:



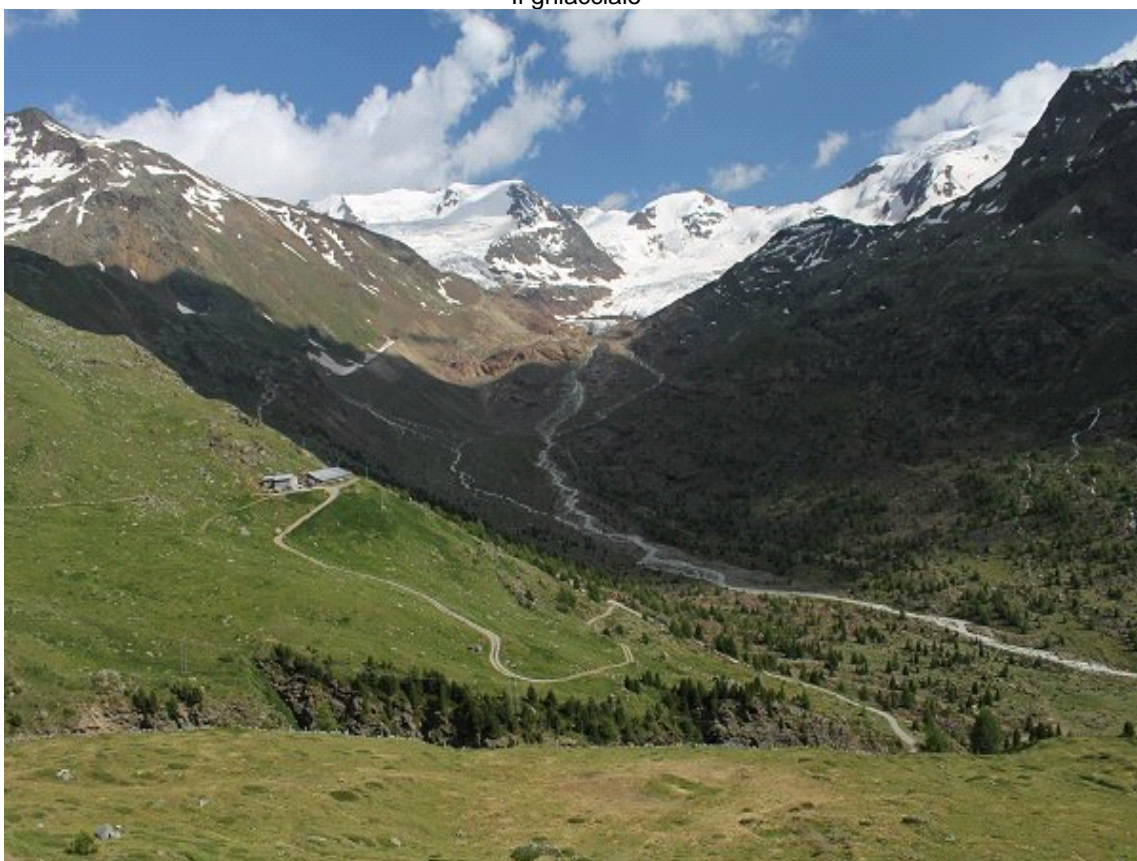
TECHNICAL DATA

Length	— 2,738 Km	Skill	—
Duration	🕒 1:00 - 2:00 h	Condition	—
Uphill height difference	⬆️ 333 m	Effort	—
height difference downhill	⬆️ 5 m	Natural pavement	95%
Maximum slope uphill	⬆️ 26%	Asphalt pavement	5%
Maximum slope downhill	⬆️ 2%	Cobblestones	0%
Minimum and maximum quota	🏔️ 2487 m	Equipped trail	0%
	2176 m	Scree pavement	0%
		Other types of pavements	0%
Period Journey	Giugno - Settembre	Not available data	0%

PHOTO GALLERY



Il ghiacciaio



Panorama

This publication is for information purposes only. We recommend you consult and check the weather forecast and snow conditions before every excursion.