



# Terza Cantoniera - Rese Basse Laghetto Tornante quota 2588 con joelette



Medium



5,523 Km



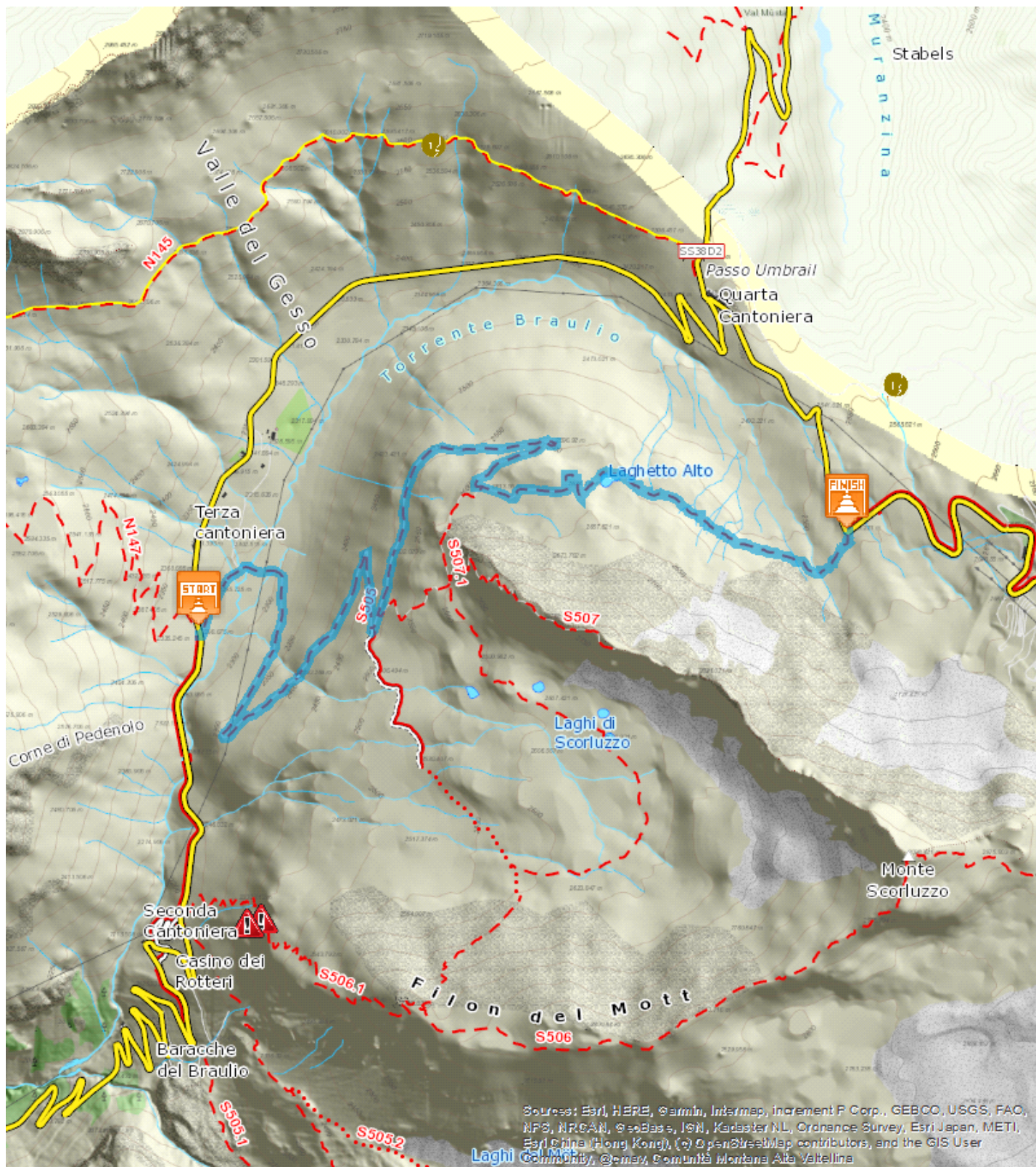
01:47 h



361 m



75 m



Sources: Esri, HERE, Garmin, Intermap, increment P Corp., GEBCO, USGS, FAO, NPS, NRCAN, @swBee, IGN, Kartaster NL, Ordnance Survey, Esri Japan, METI, Esri China (Hong Kong), (c) OpenStreetMap contributors, and the GIS User Community, @comex, Comunità Montana Alta Valtellina



**Start:**Terza Cantoniera

**Arrival:**

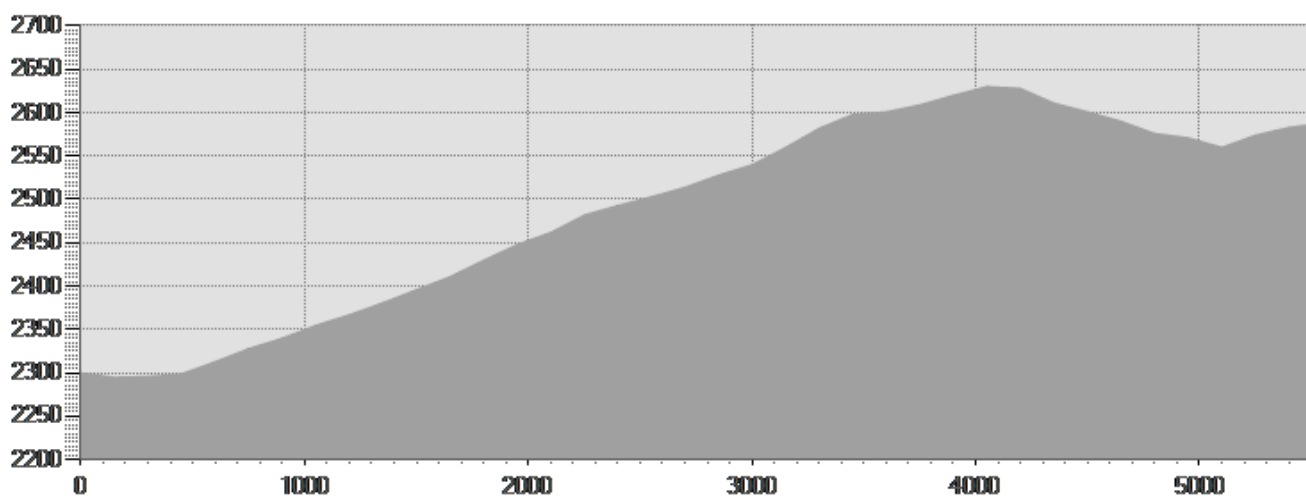
**Equipment required:**

**Difficulty description:**

**Parking Area:**

**Map:**

**Author:**



## TECHNICAL DATA

Length	— 5,523 Km	Skill	--
Duration	🕒 01:47 h	Condition	--
Uphill height difference	⤴ 361 m	Effort	--
height difference downhill	⤵ 75 m	Natural pavement	99%
Maximum slope uphill	⤴ 15%	Asphalt pavement	1%
Maximum slope downhill	⤵ 11%	Cobblestones	0%
Minimum and maximum quota	2630 m	Equipped trail	0%
		Scree pavement	0%
		Other types of pavements	0%
Period Journey	Giugno - Settembre	Not available data	0%

*This publication is for information purposes only. We recommend you consult and check the weather forecast and snow conditions before every excursion.*