



Sentiero "Le Sorgenti"



Valtellina
Outdoor

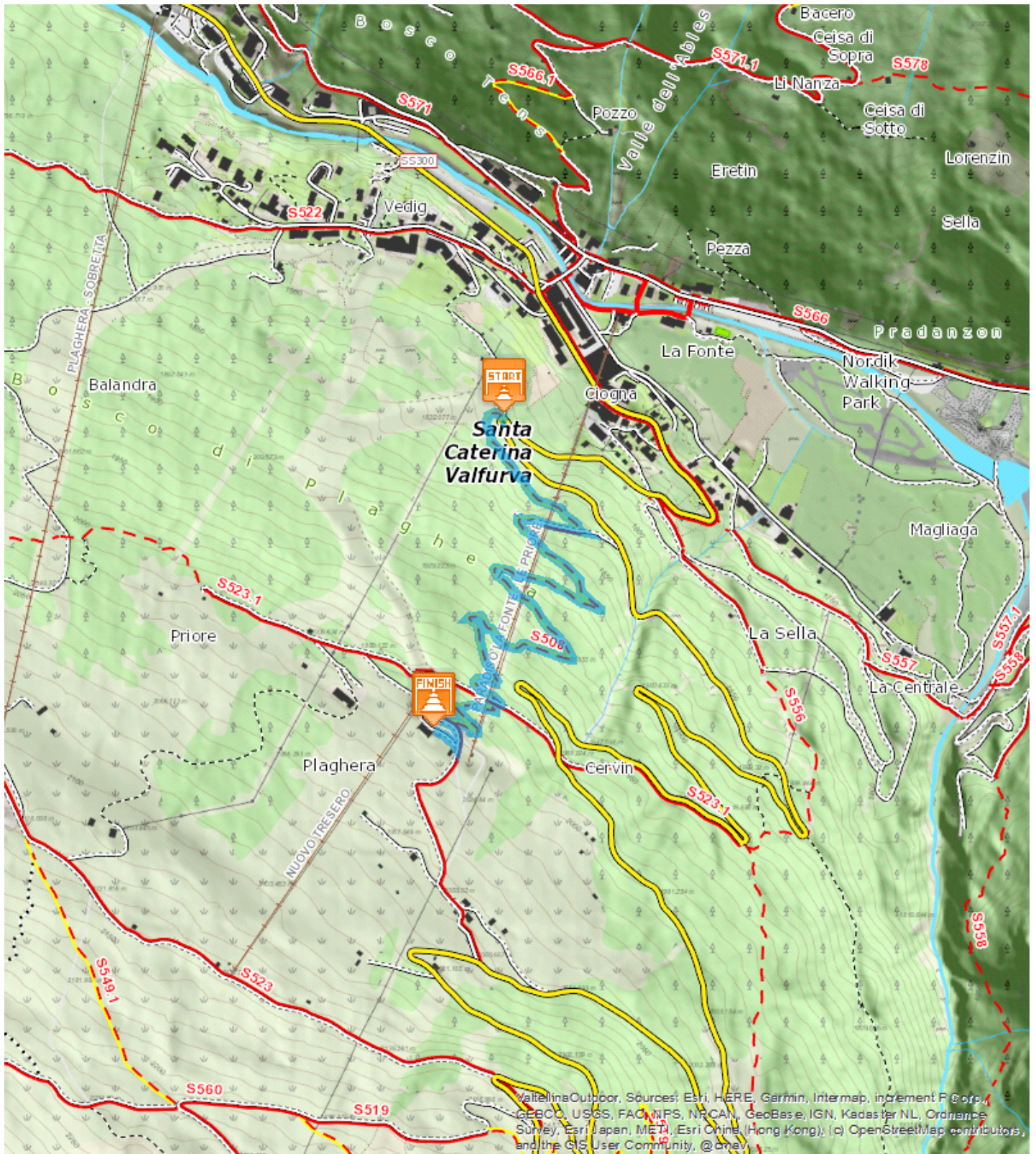
Easy ■

— 1,83 Km

🕒 00:42 h

📈 209 m

📉 0 m



ValtellinaOutdoor. Sources: Esri, HERE, Garmin, Intermap, increment P Corp., GEBCO, USGS, FAO, NPS, NRCAN, GeoBase, IGN, Kadaster NL, Ordnance Survey, Esri Japan, METI, Esri China (Hong Kong), (c) OpenStreetMap contributors, and the GIS User Community, @Ornav



Starting from S.Caterina-La Fonte you take the trail that runs along the Cevedale slope and after going through the subway passage it continues along Via Ciogna until you get onto the Gavia Pass road that you have to walk uphill until the second hairpin turn (approx. 200m). From here you'll leave the paved road and enter the woods where the trail rises gradually in the forest until you reach Plaghera village (near the restaurants Paradiso and Sci2000).

Start:Santa Caterina

Arrival:Plaghera

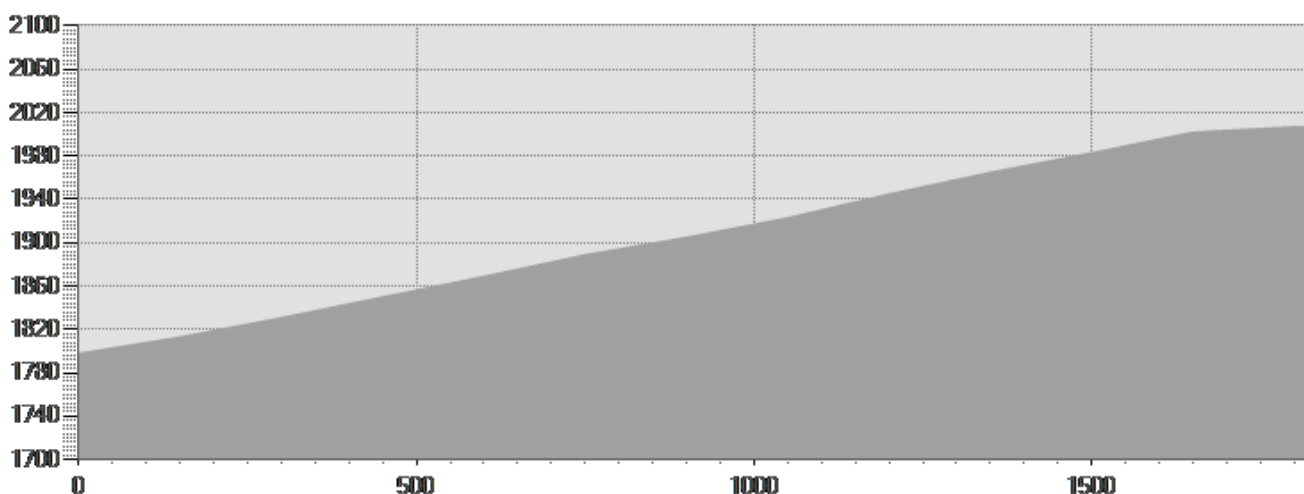
Equipment required:

Difficulty description:

Parking Area:Parcheggio Forni

Map:

Author:



TECHNICAL DATA

| | | | |
|----------------------------|-----------|--------------------------|-------|
| Length | — 1,83 Km | Skill | --- |
| Duration | 🕒 00:42 h | Condition | ★★★★★ |
| Uphill height difference | ⤴ 209 m | Effort | ★★★★★ |
| height difference downhill | ⤵ 0 m | Natural pavement | 100% |
| Maximum slope uphill | ⤴ 15% | Asphalt pavement | 0% |
| Maximum slope downhill | ⤵ 0% | Cobblestones | 0% |
| Minimum and maximum quota | 🏔 2007 m | Equipped trail | 0% |
| | 1814 m | Scree pavement | 0% |
| Period Journey | Giugno - | Other types of pavements | 0% |
| | Settembre | Not available data | 0% |

This publication is for information purposes only. We recommend you consult and check the weather forecast and snow conditions before every excursion.