



Val Viola - Anello Alpe Dosde' Rifugio Caricc con Joelette



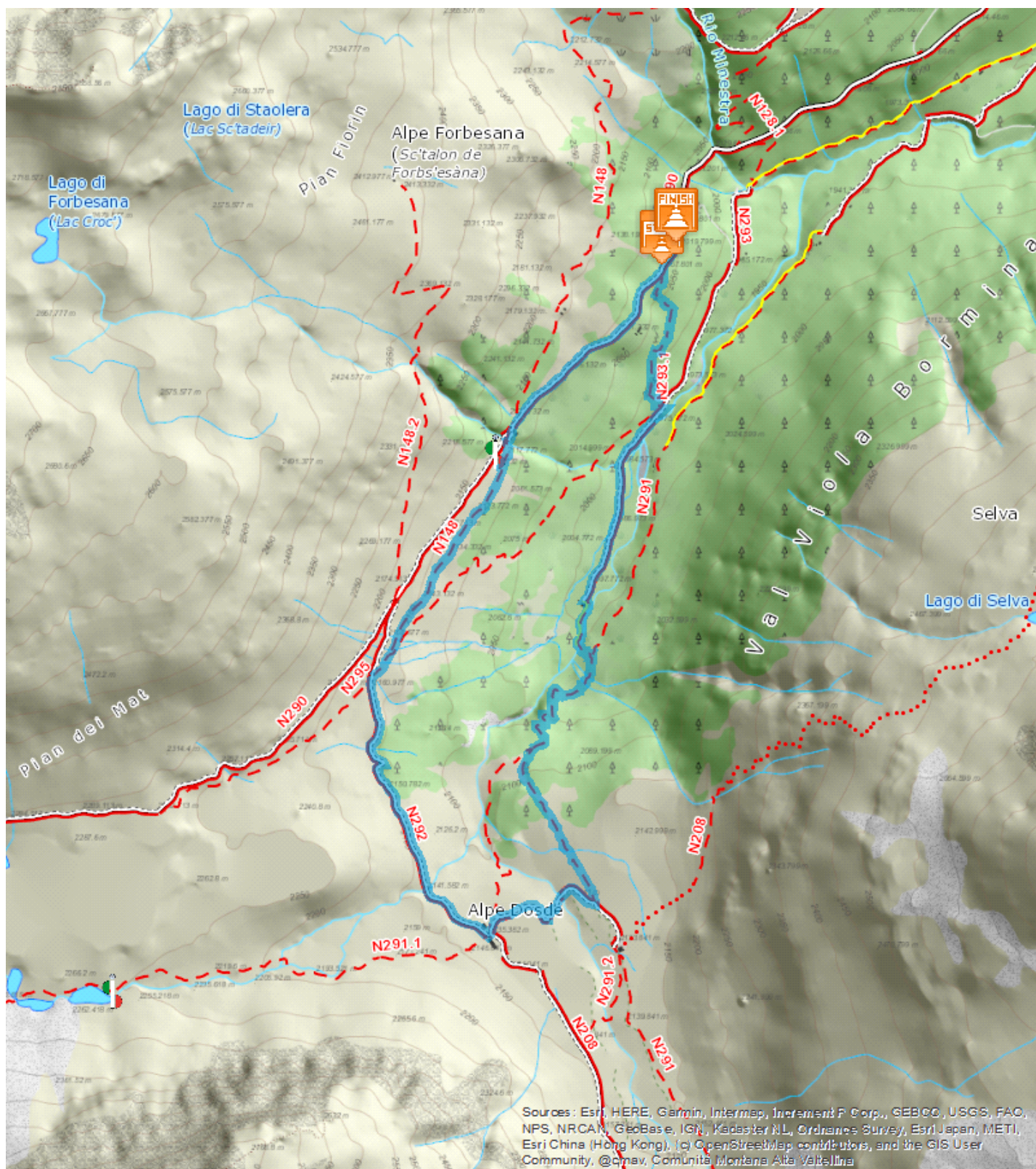
Medium ■

5,292 Km

01:39 h

186 m

194 m





Start: Arnoga - Parcheggio Altumeira

Arrival: Arnoga - Parcheggio Altumeira

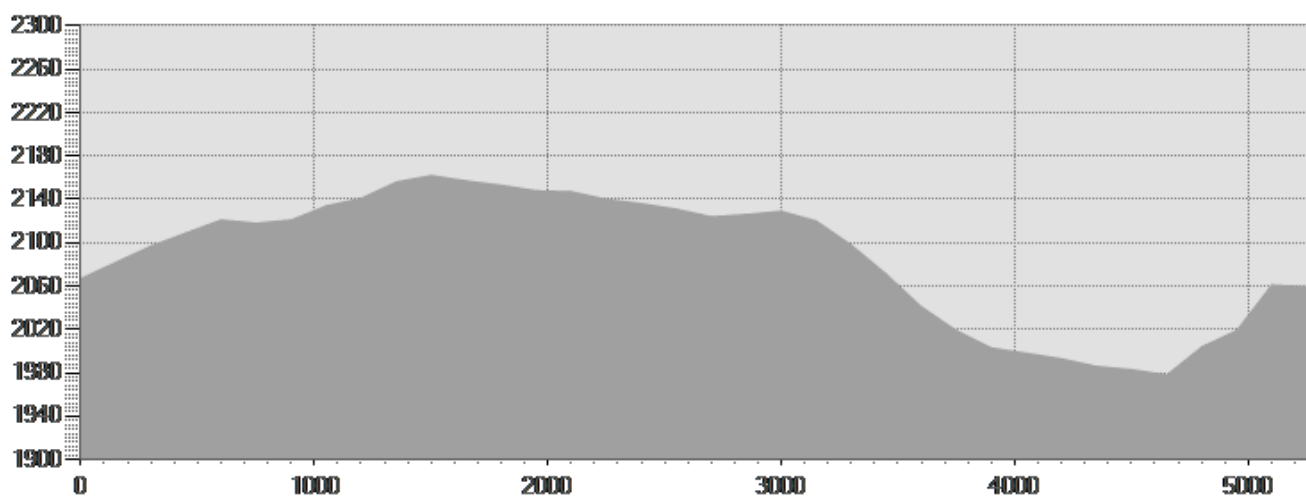
Equipment required:

Difficulty description:

Parking Area: Altumeira (parcheggio n. 4)

Map:

Author:



TECHNICAL DATA

Length	— 5,292 Km	Skill	--
Duration	☀ 01:39 h	Condition	--
Uphill height difference	↗ 186 m	Effort	--
height difference downhill	↘ 194 m	Natural pavement	96%
Maximum slope uphill	↗ 28%	Asphalt pavement	2%
Maximum slope downhill	↘ 20%	Cobblestones	3%
Minimum and maximum quota	2163 m	Equipped trail	0%
		Scree pavement	0%
		Other types of pavements	0%
Period Journey	Giugno - Ottobre	Not available data	0%

This publication is for information purposes only. We recommend you consult and check the weather forecast and snow conditions before every excursion.