



Paluaccio e Forte di Oga

Forte di Oga - Paluaccio - Forte di Oga - Forte di Oga

Easy

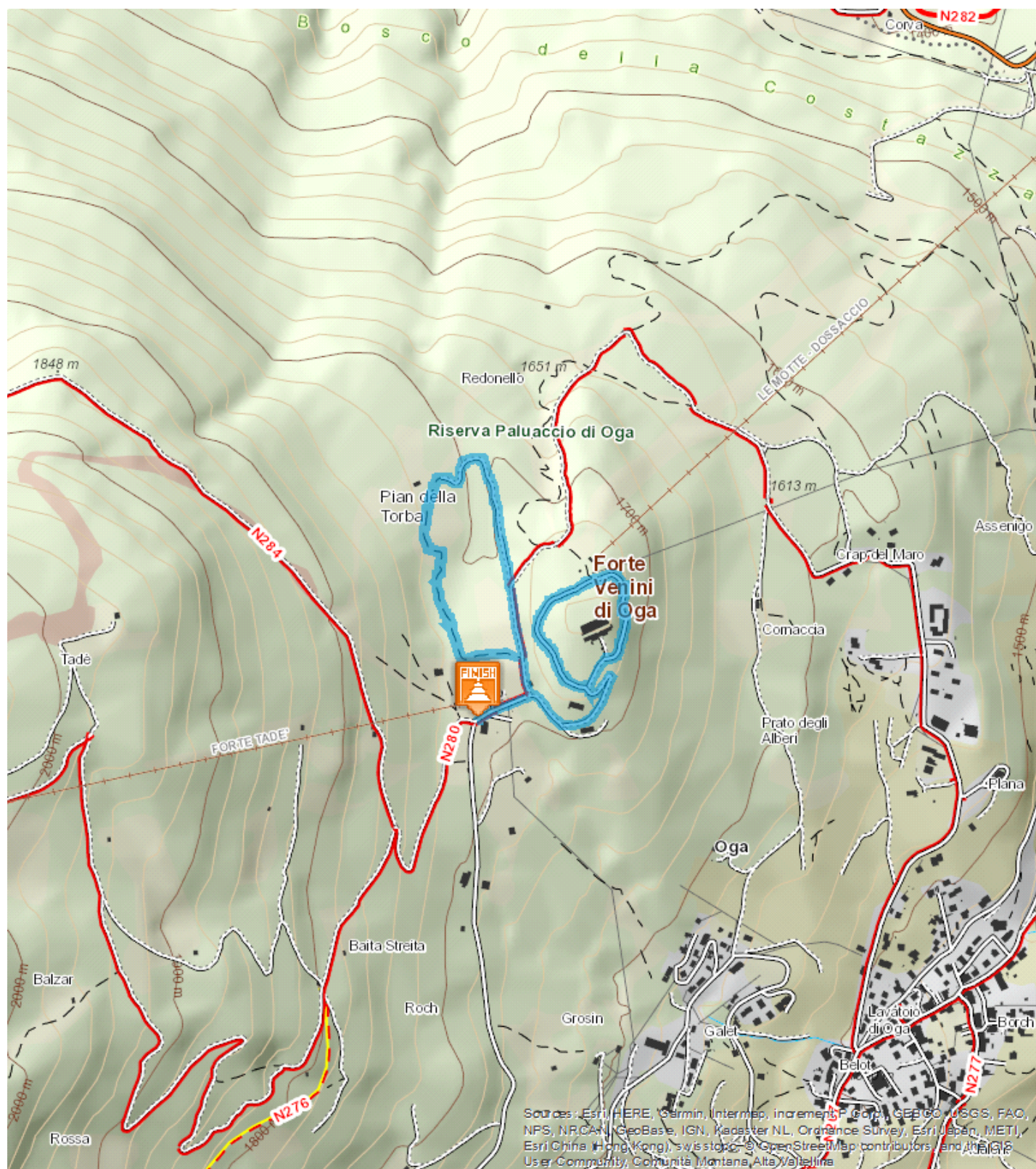


2,287 Km

00:38 h

82 m

81 m





Starting from the parking area at the Oga Fortress, the trail follows path N280 then on the left crosses a trail that leads to Pian della Torbat and the Paluaccio Reserve. Taking the other branch of the fork, you reach the Venini Fort then return to your starting point. This pleasant walk allows you to immerse yourself in nature at the Paluaccio nature reserve, a valuable environmental resource, as well as savouring some local history at the Venini Fort, built in World War I to defend passes at risk from Austrian incursions. Now, following restoration, it is well preserved and a worthwhile destination for all history enthusiasts.

The Paluaccio Reserve. Created in 1983 with the intention of preserving the delicate peat bog environment, the Paluaccio Reserve covers an area of over 30 hectares. It retains a variety of environments of considerable natural interest low and intermediate bogs, peat meadows, nard grasslands and wooded areas.

Start:Forte di Oga

Arrival:Forte di Oga

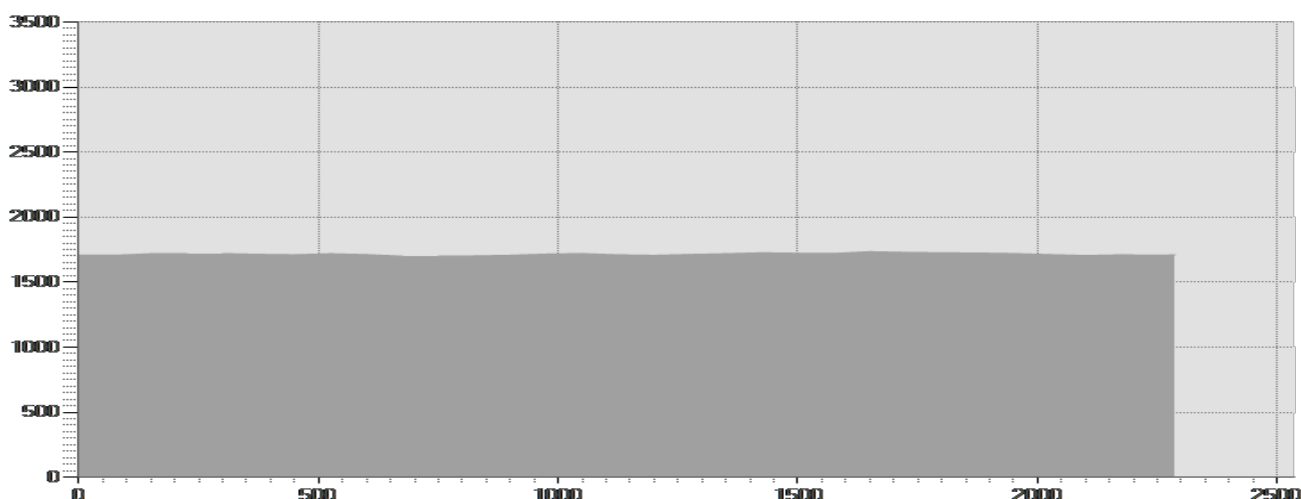
Equipment required:

Difficulty description:

Parking Area:

Map:Bike and Trekking Map Alta Valtellina n° 4

Author:



TECHNICAL DATA

Length	— 2,287 Km	Skill	★★★★★
Duration	🕒 00:38 h	Condition	★★★★★
Uphill height difference	⬆️ 82 m	Effort	★★★★★
height difference downhill	⬆️ 81 m	Natural pavement	69%
Maximum slope uphill	⬆️ 19%	Asphalt pavement	31%
Maximum slope downhill	⬆️ 7%	Cobblestones	0%
Minimum and maximum quota	🏔️ 1735 m	Equipped trail	0%
	1700 m	Scree pavement	0%
Period Journey	Aprile - Ottobre	Other types of pavements	0%
		Not available data	0%

PHOTO GALLERY



Forte di Oga



La riserva del Paluaccio

This publication is for information purposes only. We recommend you consult and check the weather forecast and snow conditions before every excursion.