

S. Caterina - La Sella - Plaghera

Medium

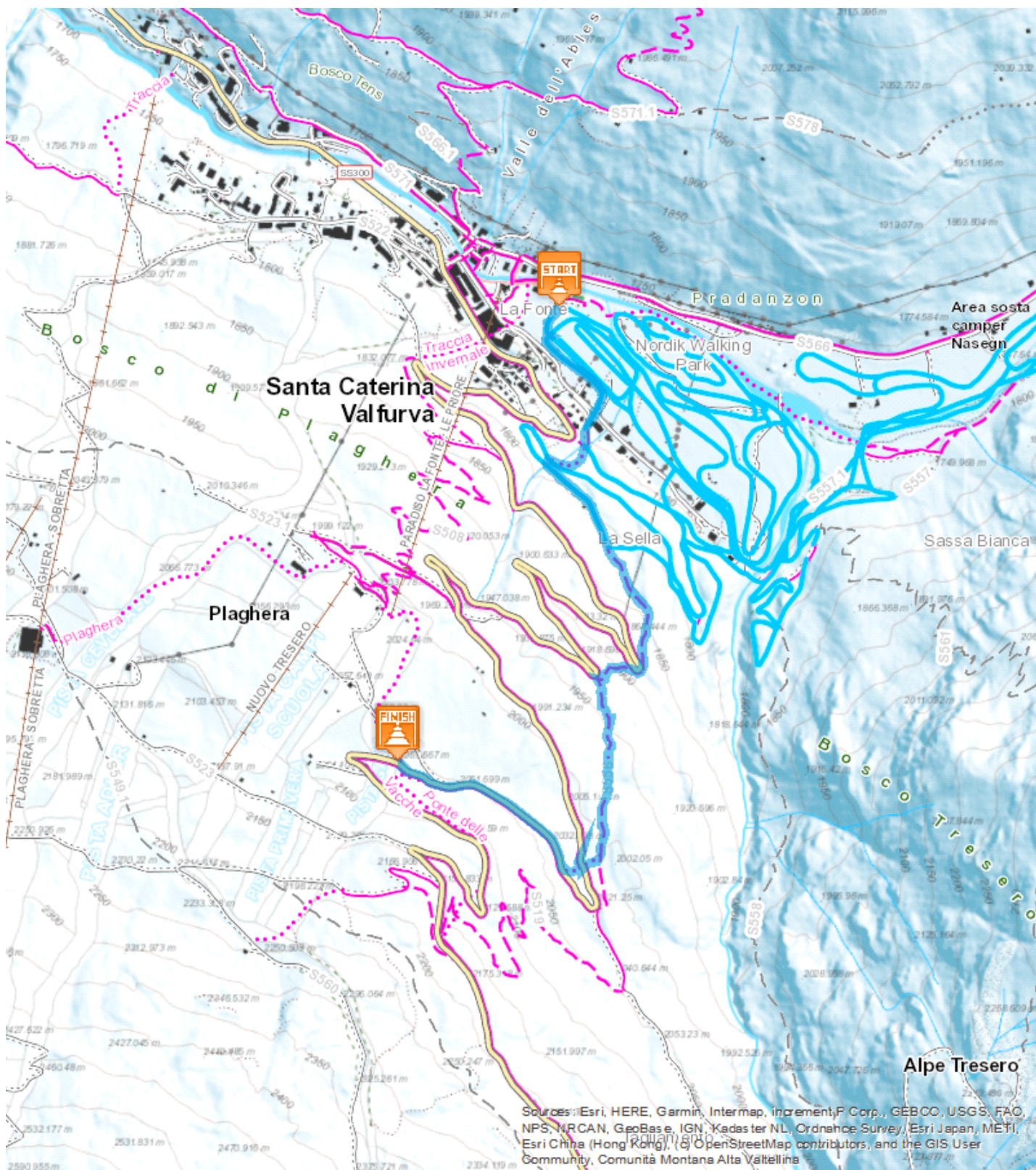


2,324 Km

2:00 - 2:00 h

333 m

0 m





From the Centro La Fonte in Santa Caterina Valfurva head along the Valtellina cross-country ski track over the overpass, then take the trail to the right that continues through the forest. The trail opens onto the road to the Gavia Pass, close to the turning that leads to Ponte delle Vacche. Continue along the road to the Gavia until you reach Plaghera. From here it is possible to ski down. Please respect the direction of travel on the cross-country track, keep to the side and give right of way to cross-country skiers at all times.

Start:

Arrival:

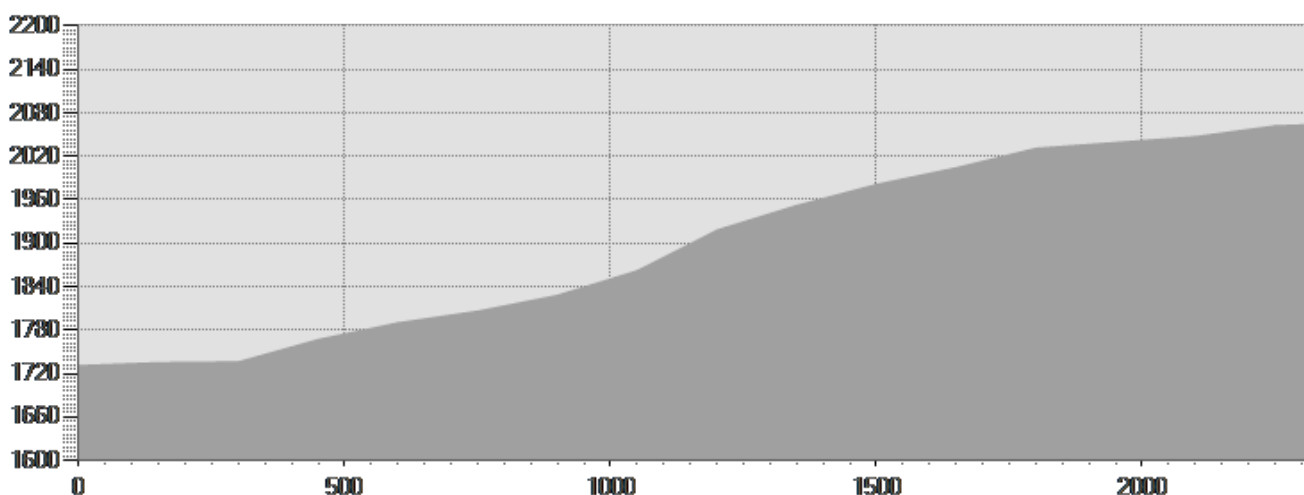
Equipment required:- Carry with you the mandatory self-rescue equipment: shovel, beacon, and probe. - Wear clothing and use equipment suitable for ski mountaineering (skis with suitable bindings, boots, poles, skins, and helmet, plus shovel, beacon, and probe).

Difficulty description:

Parking Area:

Map:

Author:



TECHNICAL DATA

Length	— 2,324 Km	Skill	—
Duration	🕒 2:00 - 2:00 h	Condition	—
Uphill height difference	📈 333 m	Effort	—
height difference downhill	📉 0 m		
Maximum slope uphill	📈 37%		
Maximum slope downhill	📉 0%		
Minimum and maximum quota	📊 2065 m 1736 m		
Period Journey	📅 Dicembre - Marzo		

This publication is for information purposes only. We recommend you consult and check the weather forecast and snow conditions before every excursion.