



Sentiero delle sorgenti

Sentiero del Paradiso

Easy



2,224 Km



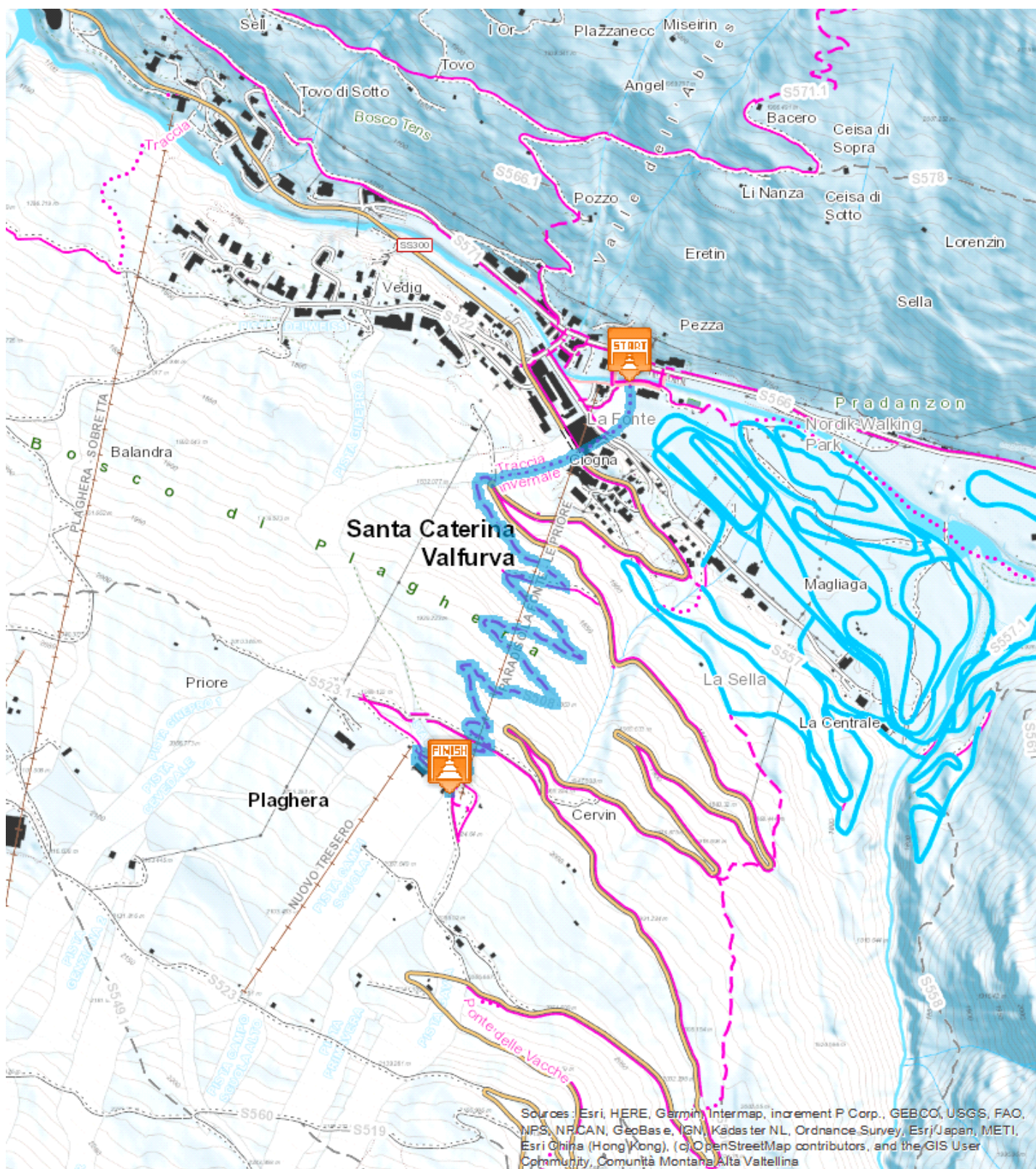
00:55 h



283 m



0 m





From the center "La Fonte", take the left side of the Pista Valtellina which goes up the Cevedale ski slope for a few meters. The track continues gently uphill in the woods for about 3 km, until the locality of Plaghera. Here you will find yourself completely immersed in the woods until you reach the junction toward the Paradiso Refuge and Sci 200 Refuge, both perfect stops for a break. It is possible to return to town on foot, retracing your steps, or using the Paradiso chairlift.

Start:Santa Caterina

Arrival:Plaghera

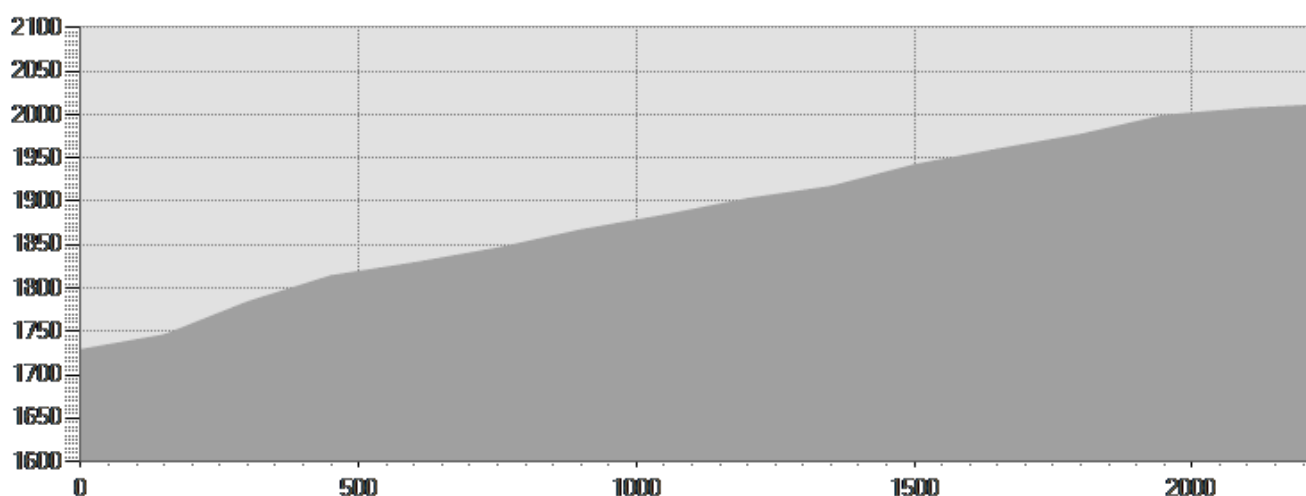
Equipment required:

Difficulty description:

Parking Area:

Map:

Author:



TECHNICAL DATA

Length	— 2,224 Km	Skill	★★★★★
Duration	🕒 00:55 h	Condition	★★★★★
Uphill height difference	📈 283 m	Effort	★★★★★
height difference downhill	📉 0 m		
Maximum slope uphill	📏 25%		
Maximum slope downhill	📏 0%		
Minimum and maximum quota	📍 2012 m 1746 m		
Period Journey	📅 Gennaio - Marzo		

This publication is for information purposes only. We recommend you consult and check the weather forecast and snow conditions before every excursion.