


Santa Caterina - Localita' Speluga - Linanza - Ceisa - Bacero - Monich - Ables


Medium

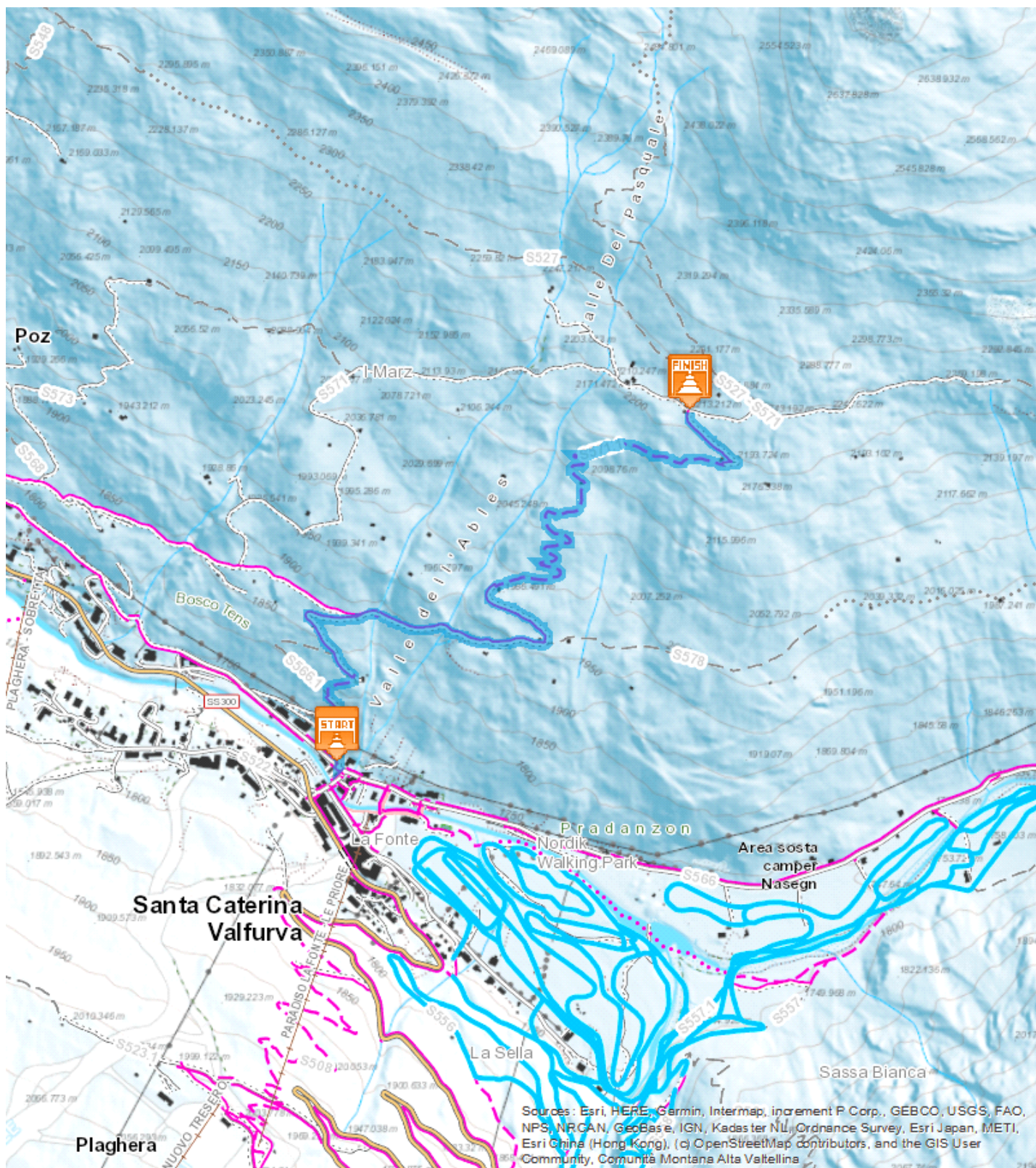


2,675 Km

 01:42 h

 479 m

 0 m





**Start:**Santa Caterina Valfurva

**Arrival:**Ables

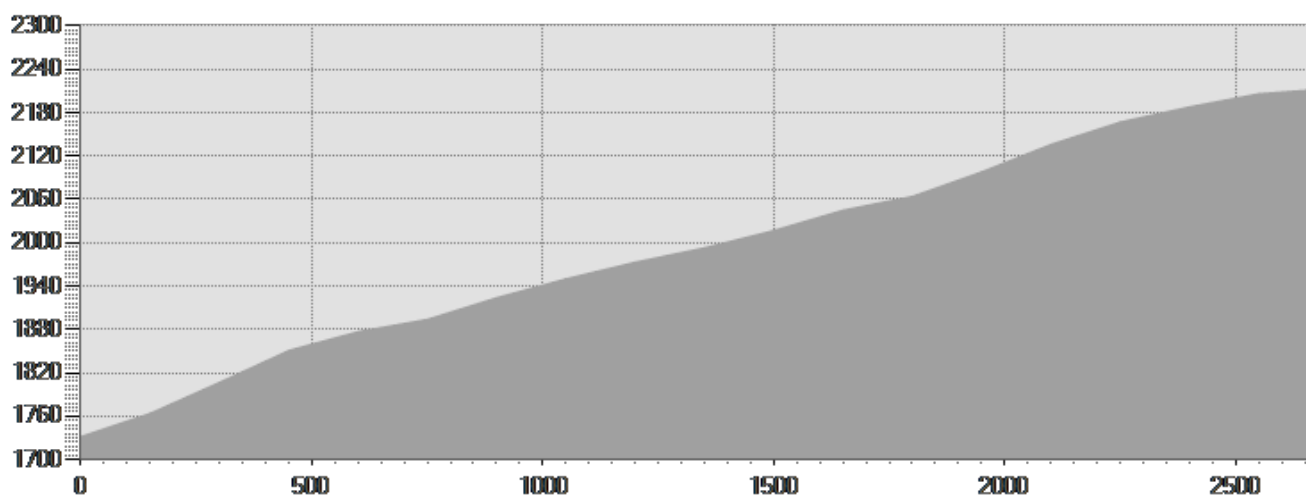
**Equipment required:**

**Difficulty description:**

**Parking Area:**

**Map:**

**Author:**



## TECHNICAL DATA

Length	— 2,675 Km	Skill	☆☆☆☆☆
Duration	🕒 01:42 h	Condition	☆☆☆☆☆
Uphill height difference	📈 479 m	Effort	☆☆☆☆☆
height difference downhill	📉 0 m		
Maximum slope uphill	📈 29%		
Maximum slope downhill	📉 0%		
Minimum and maximum quota	 2212 m 1765 m		
Period Journey	Dicembre - Aprile		

*This publication is for information purposes only. We recommend you consult and check the weather forecast and snow conditions before every excursion.*