



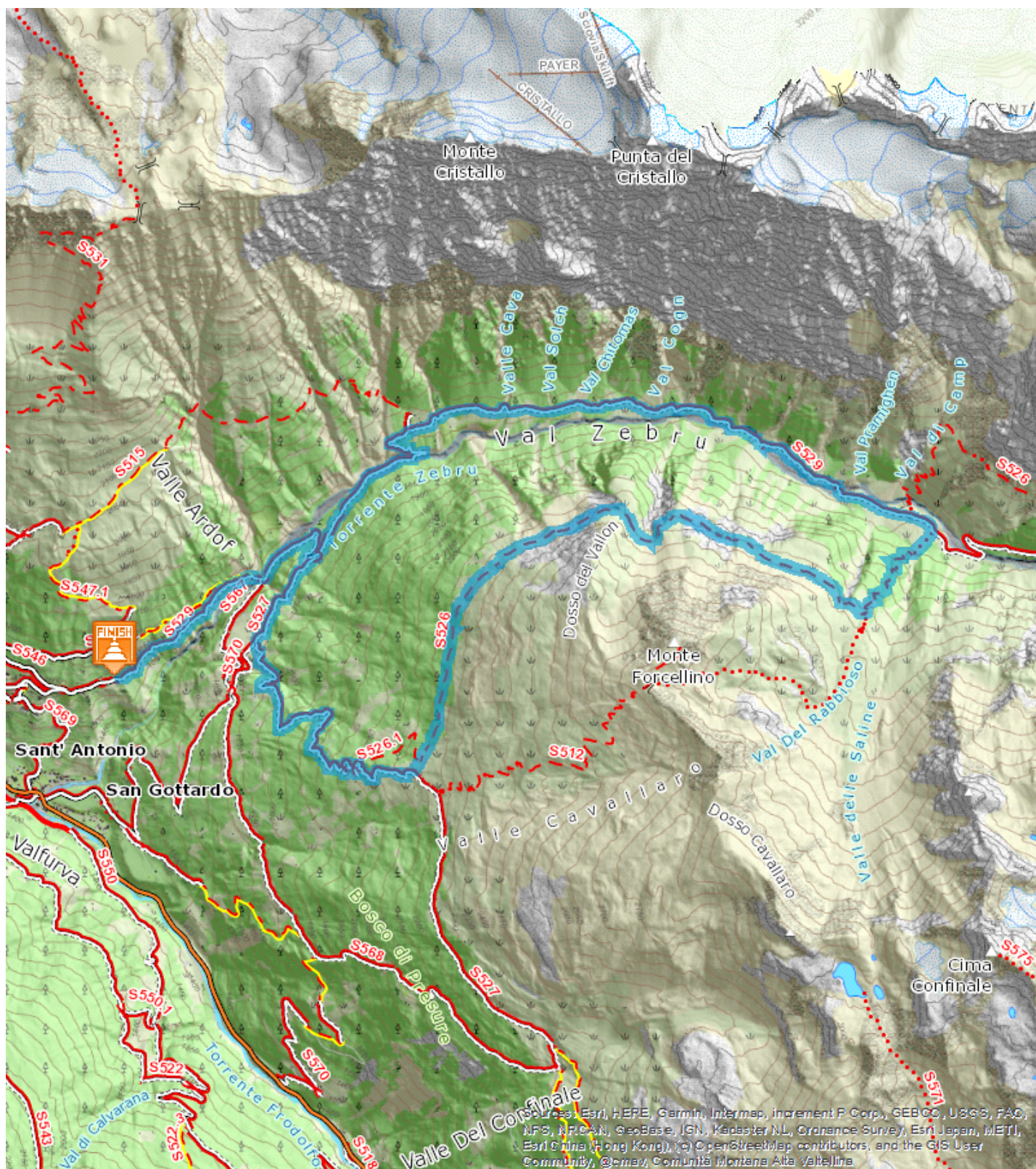


Niblogo - Val Zebbru' - Baite Campo - Costantini - Cavallaro - Niblogo

Medium  — 18,873 Km  6:00 - 7:00 h  878 m  878 m





From the hamlet of Niblogo, at Madonna dei Monti, follow bridleway S529 which leads to the Val Zebbru'. At the Peceneccia bridge take the road to the left to enter the Val Zebbru' itself, following the stream for a short distance. The path is smooth and initially runs through thick forest, with deep ravines and green terraces with typical mountain huts. The area is home to ungulates deer, chamois, etc. and the majestic bearded vulture, recently reintroduced to the Stelvio National Park. Once at the mountain huts of Campo at an altitude of 1,948 metres, head to the right up a steep winding trail to the path to the Costantini hut, then continue on the mostly flat path S526 to the mountain huts of Cavallaro. From here descend along a steep winding path S527 back to the bridleway near the Zebbru' Refuge, then return to the hamlet of Niblogo.

Bearded vulture A tireless flyer, it can cover up to 700 km in one day. Recently reintroduced to Alta Valtellina, it has found its natural habitat thanks to the landscape with its cliffs ideal for building nests and open areas that make it easy to sight animal carcasses.

Start:Niblogo **Arrival:**Niblogo

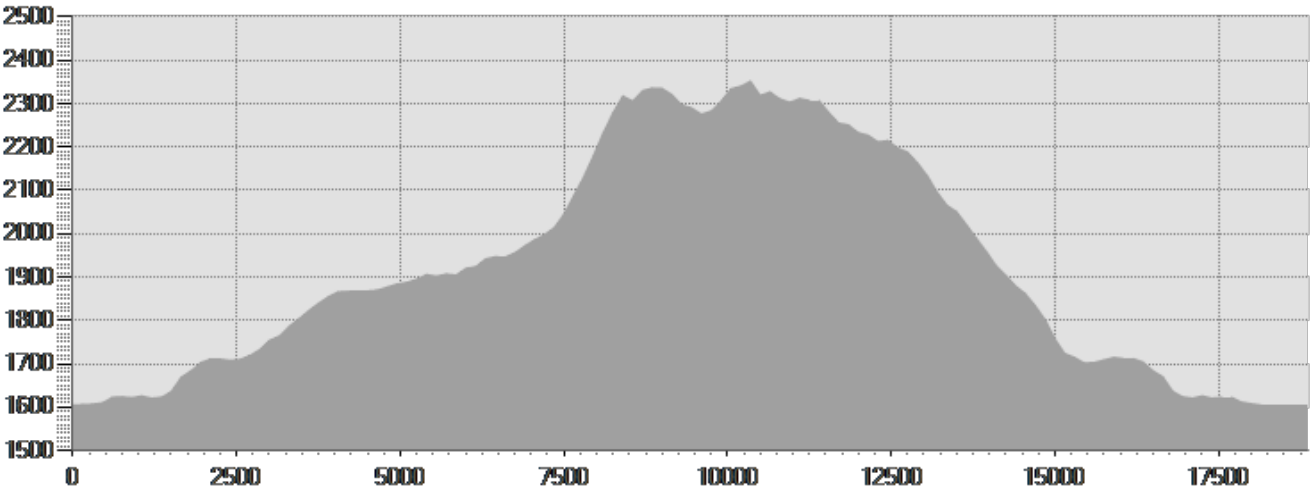
Equipment required:

Difficulty description:

Parking Area:

Map:Bike and Trekking Map Alta Valtellina n° 6

Author:



TECHNICAL DATA

Length	— 18,873 Km	Skill	★★★★★
Duration	🕒 6:00 - 7:00 h	Condition	★★★★★
Uphill height difference	⬆️ 878 m	Effort	★★★★★
height difference downhill	⬆️ 878 m	Natural pavement	99%
Maximum slope uphill	⬆️ 35%	Asphalt pavement	1%
Maximum slope downhill	⬆️ 29%	Cobblestones	0%
Minimum and maximum quota	🏔️ 2352 m	Equipped trail	0%
	1606 m	Scree pavement	0%
Period Journey	Giugno -	Other types of pavements	0%
	Settembre	Not available data	0%

PHOTO GALLERY



Val Zebrù



Gipeto

This publication is for information purposes only. We recommend you consult and check the weather forecast and snow conditions before every excursion.