
 Enjoy Stelvio Valtellina - Passo Gavia da Santa Caterina



Hard

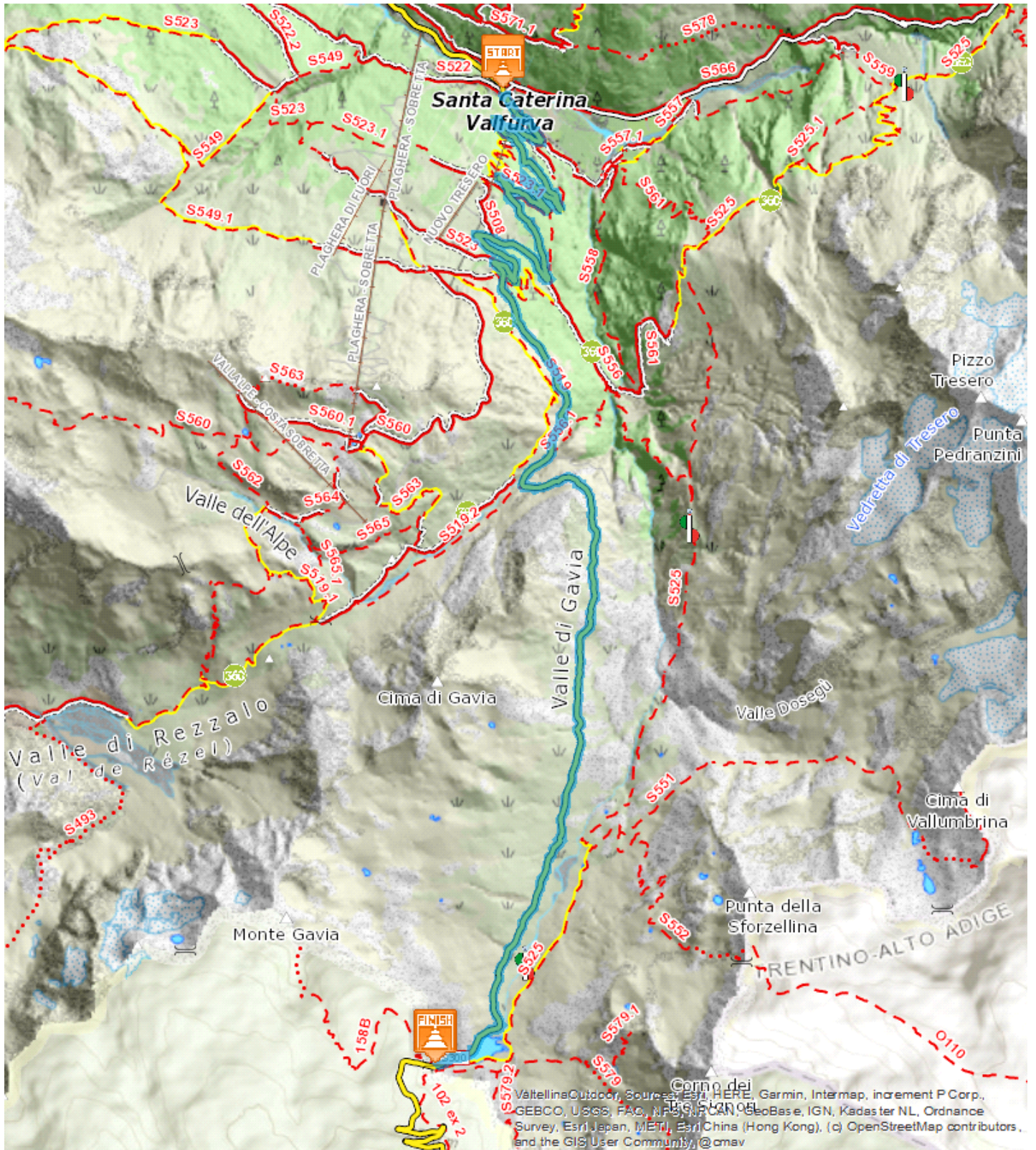


13,324 Km

 4:00 - 5:00 h

 883 m

 1 m



ValtellinaOutdoor, Sources: Esri, HERE, Garmin, Intermap, increment P Corp., GEBCO, U.S.GS, FAO, NPS, NRC, GeoBase, IGN, Kadaster NL, Ordnance Survey, Esri Japan, METI, Esri China (Hong Kong), (c) OpenStreetMap contributors, and the GIS User Community, @cmav



Start:Santa Caterina Valfurva

Arrival:Passo Gavia

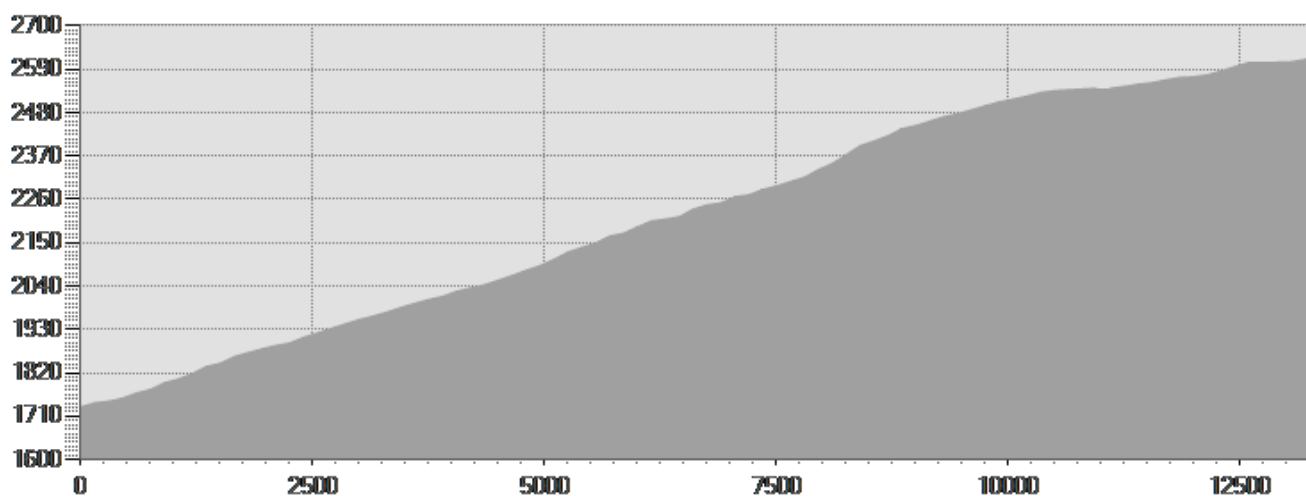
Equipment required:

Difficulty description:


Parking Area:

Map:

Author:



TECHNICAL DATA

| | | | |
|----------------------------|--|--------------------------|------|
| Length | — 13,324 Km | Skill | -- |
| Duration | ☀ 4:00 - 5:00 h | Condition | -- |
| Uphill height difference | ↗ 883 m | Effort | -- |
| height difference downhill | ↘ 1 m | Natural pavement | 0% |
| Maximum slope uphill | ↗ 15% | Asphalt pavement | 100% |
| Maximum slope downhill | ↘ 0% | Cobblestones | 0% |
| Minimum and maximum quota |  2617 m | Equipped trail | 0% |
| | | Scree pavement | 0% |
| | | Other types of pavements | 0% |
| Period Journey | Giugno - Ottobre | Not available data | 0% |

This publication is for information purposes only. We recommend you consult and check the weather forecast and snow conditions before every excursion.