



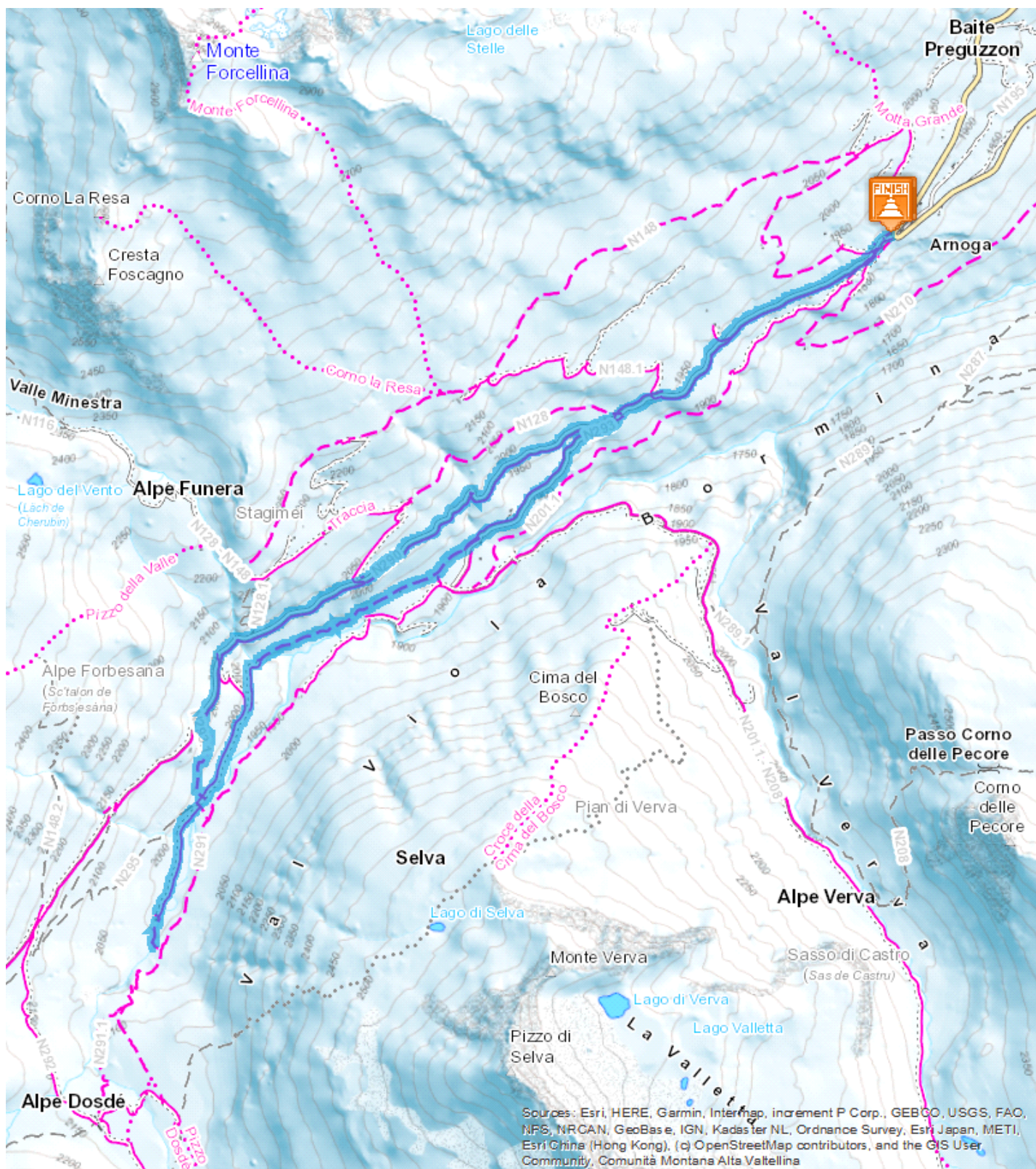


Arnoga - Val Viola - Baite Caricc - Arnoga

Medium  10,919 Km  2:00 - 3:00 h  300 m  300 m





A very easy itinerary, which in the middle offers two alternative routes, taking you through woods of spruce, larch and stone pine to the glade of Malga Caricc, in an enchanting position below the peaks of the group Dosde' _ Viola and their glaciers. The hut, from which it is possible to reach an impressive gorge, is usually open during the winter season.

Thanks to relevant signposts, the path is practicable at night time providing oneself with frontal torch.

Start: Arnoga

Arrival: Arnoga

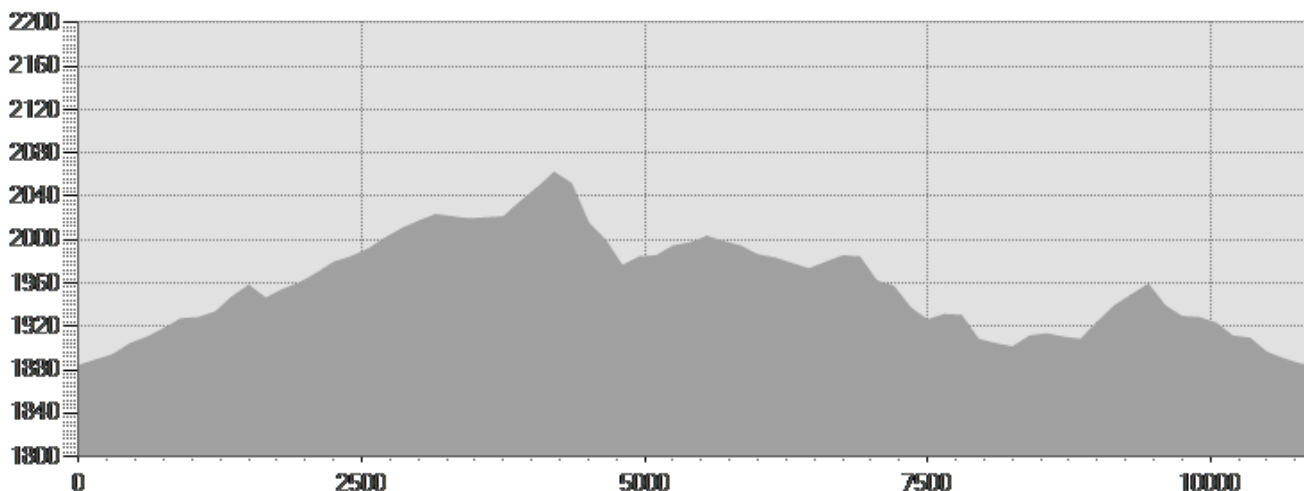
Equipment required:

Difficulty description:

Parking Area:

Map:

Author:



TECHNICAL DATA

Length	— 10,919 Km	Skill	☆☆☆☆☆
Duration	🕒 2:00 - 3:00 h	Condition	☆☆☆☆☆
Uphill height difference	⬆️ 300 m	Effort	☆☆☆☆☆
height difference downhill	⬇️ 300 m		
Maximum slope uphill	⬆️ 11%		
Maximum slope downhill	⬇️ 24%		
Minimum and maximum quota	🏔️ 2062 m 1884 m		
Period Journey	📅 Dicembre - Aprile		

This publication is for information purposes only. We recommend you consult and check the weather forecast and snow conditions before every excursion.