

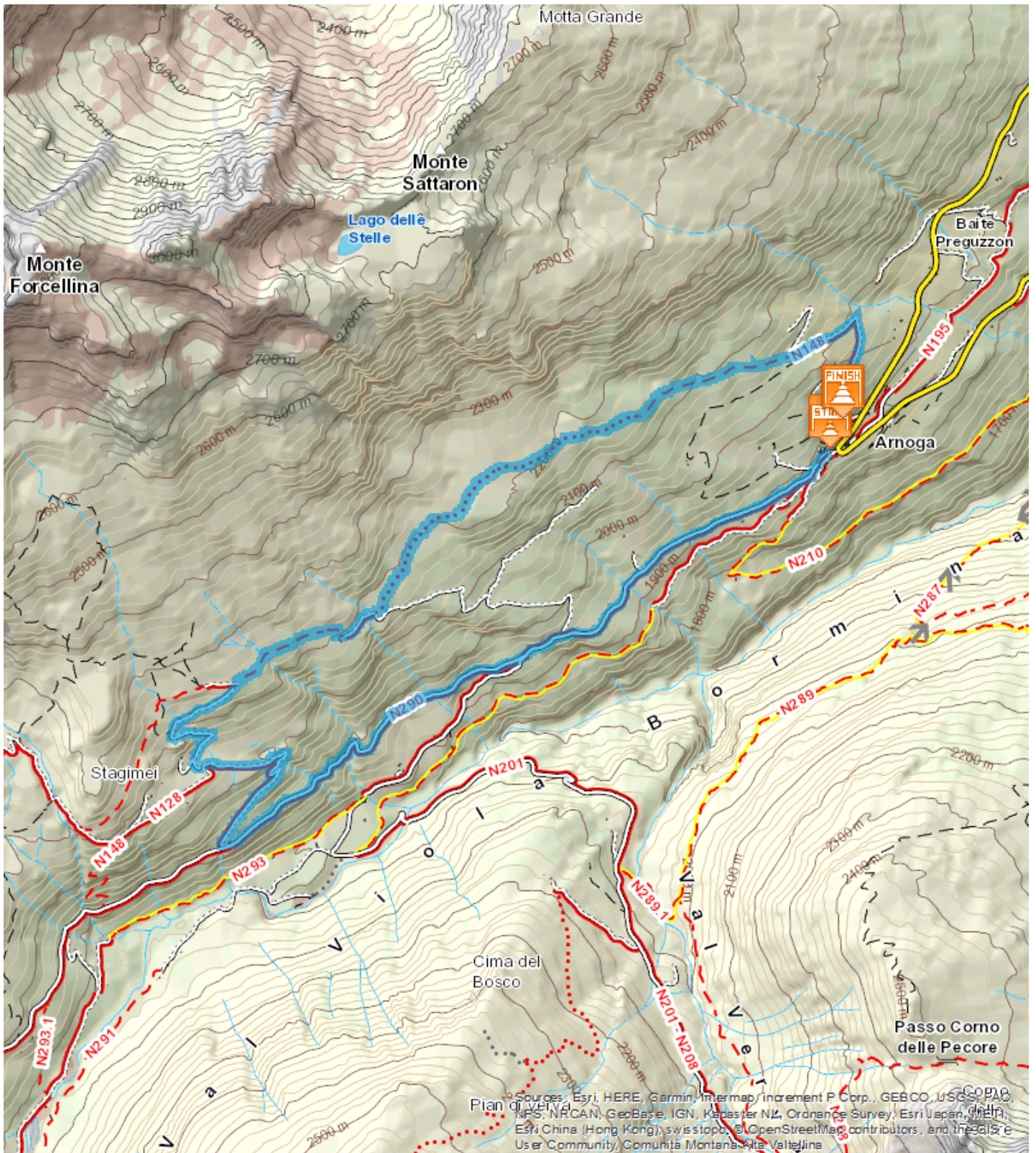


8,777 Km

02:47 h

380 m

357 m





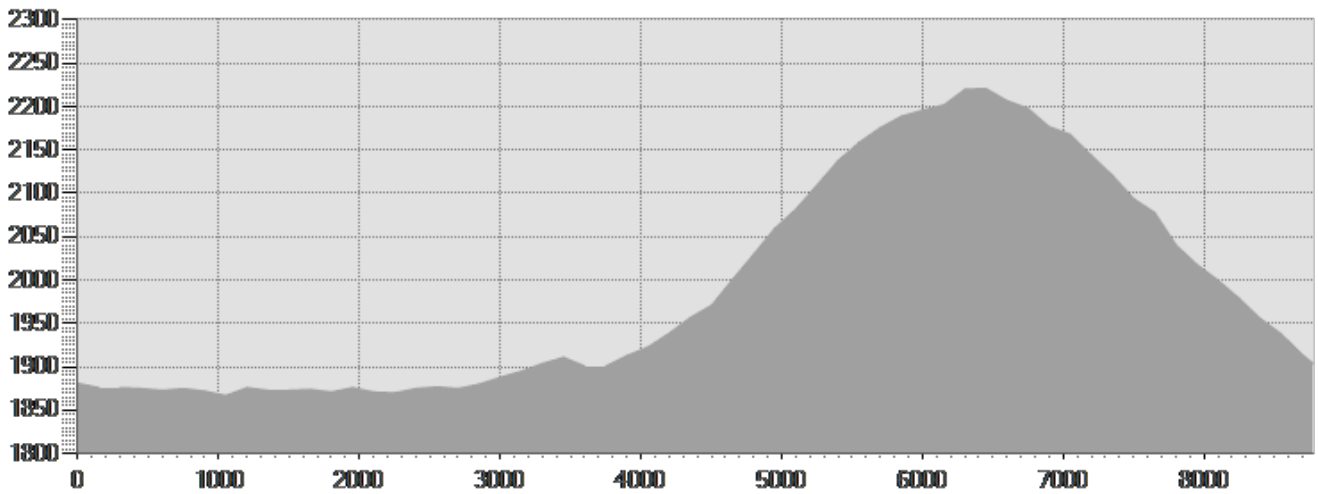
Start: Arnoga

Arrival: Arnoga

Equipment required:

Difficulty description:

Author:



## TECHNICAL DATA

Length	— 8,777 Km	Skill	★★★★★
Duration	🕒 02:47 h	Condition	★★★★★
Uphill height difference	⤴ 380 m	Effort	★★★★★
height difference downhill	⤵ 357 m	Natural pavement	79%
Maximum slope uphill	⤴ 20%	Asphalt pavement	21%
Maximum slope downhill	⤵ 12%	Cobblestones	0%
Minimum and maximum quota	🏔 2222 m	Equipped trail	0%
	1868 m	Scree pavement	0%
Accessibility for bikes	75%	Other types of pavements	0%
Period Journey	Giugno - Ottobre	Not available data	0%

*This publication is for information purposes only. We recommend you consult and check the weather forecast and snow conditions before every excursion.*