



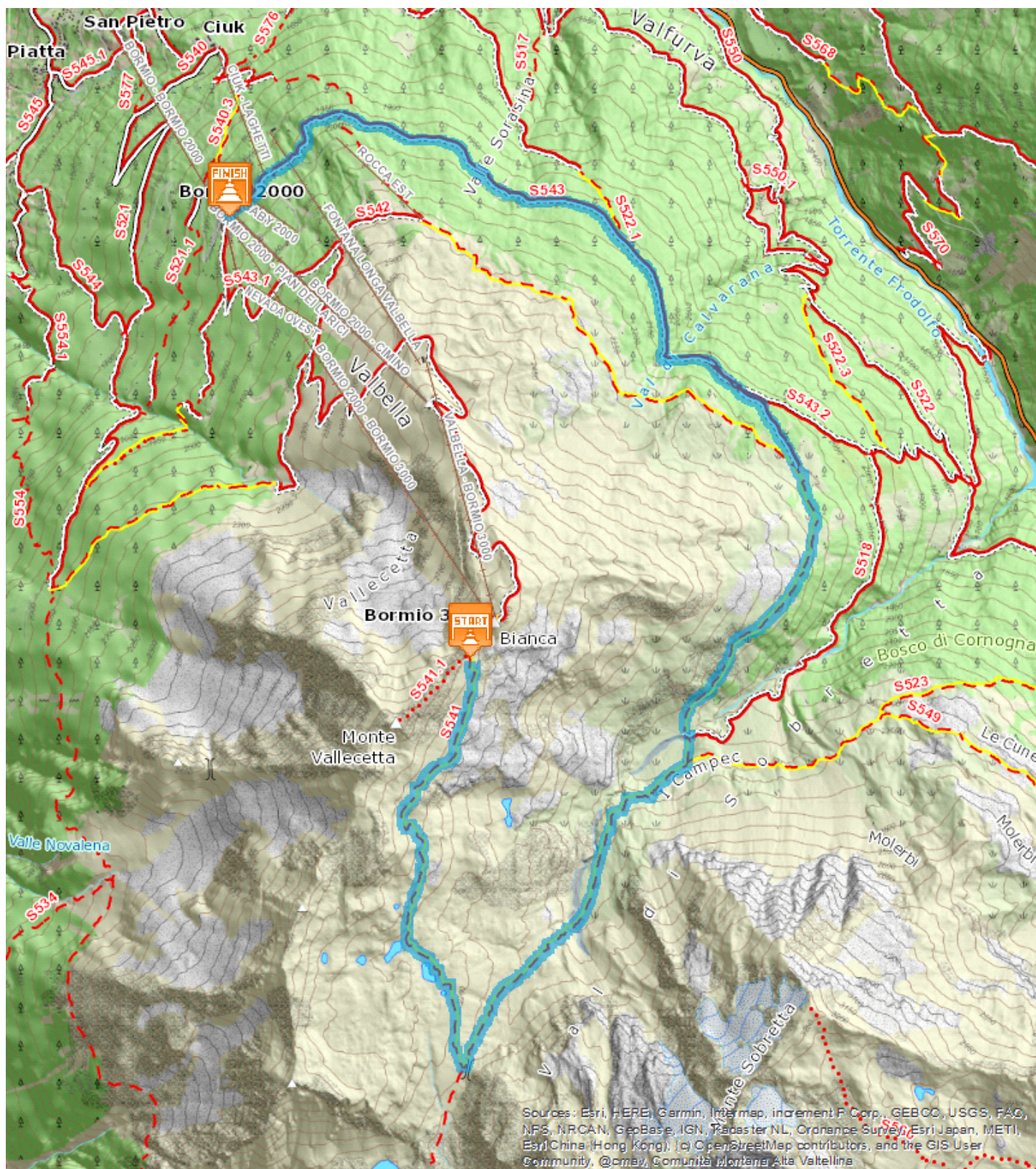


Ski Stadium Bormio - Funivia Bormio 3000 - I Bei laghetti - Sobretta - Pozzo dell'Acqua - Bormio 2000

Medium  14,166 Km  3:00 - 4:00 h  171 m  1215 m





From Bormio take the cable car up first to Bormio 2000 then to Bormio 3000. The path very technically demanding for bikers starts in a westerly direction on path S541 then descends to Bei Laghetti and Bocca di Profa. Initially the track is wide but at times crosses large rocks. At Bei Laghetti the track becomes narrower but less bumpy. Here you can observe the surrounding mountains and the bright blue of the small lakes around a dozen formed by sedimentation. At Bocca di Profa take path S518 to the left, which has some steep stretches, until you reach the dirt road to Monti di Sobretta. Continuing on path S543.2 you easily reach Bormio 2000 via Pozzo dell' Acqua and Fontanalonga. The road is both unpaved and paved, with slight ups and downs.

Lifts Some of the Alta Valtellina ski lifts are also open during the summer in order to allow hikers and bikers to access the peaks where they can enjoy unforgettable excursions and fantastic views. Opening times and prices can be found on the website: www.altavaltellina.eu.

Start:Ski Stadium Bormio **Arrival:**Bormio 2000

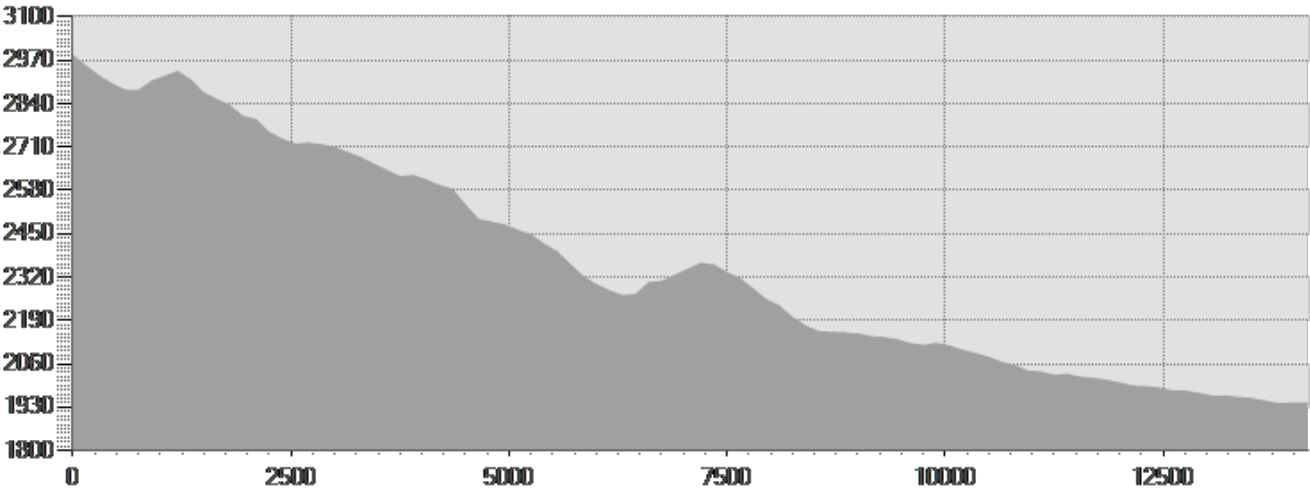
Equipment required:

Difficulty description:

Parking Area:

Map:Bike and Trekking Map Alta Valtellina n 4

Author:



TECHNICAL DATA

Length	— 14,166 Km	Skill	★★★★★
Duration	🕒 3:00 - 4:00 h	Condition	★★★★★
Uphill height difference	📈 171 m	Effort	★★★★★
height difference downhill	📉 1215 m	Natural pavement	100%
Maximum slope uphill	📈 24%	Asphalt pavement	0%
Maximum slope downhill	📉 31%	Cobblestones	0%
Minimum and maximum quota	📊 2953 m	Equipped trail	0%
	1941 m	Scree pavement	0%
Period Journey	Giugno -	Other types of pavements	0%
	Ottobre	Not available data	0%

PHOTO GALLERY



Il percorso a Sobretta



Gli impianti di risalita a Bormio 2000



I Bei Laghetti circondati dalla neve



Vista sui Bei Laghetti



I laghetti di montagna

This publication is for information purposes only. We recommend you consult and check the weather forecast and snow conditions before every excursion.