


Bar La Fonte - La Centrale - Ponte Luseda - Bar La Fonte

Easy

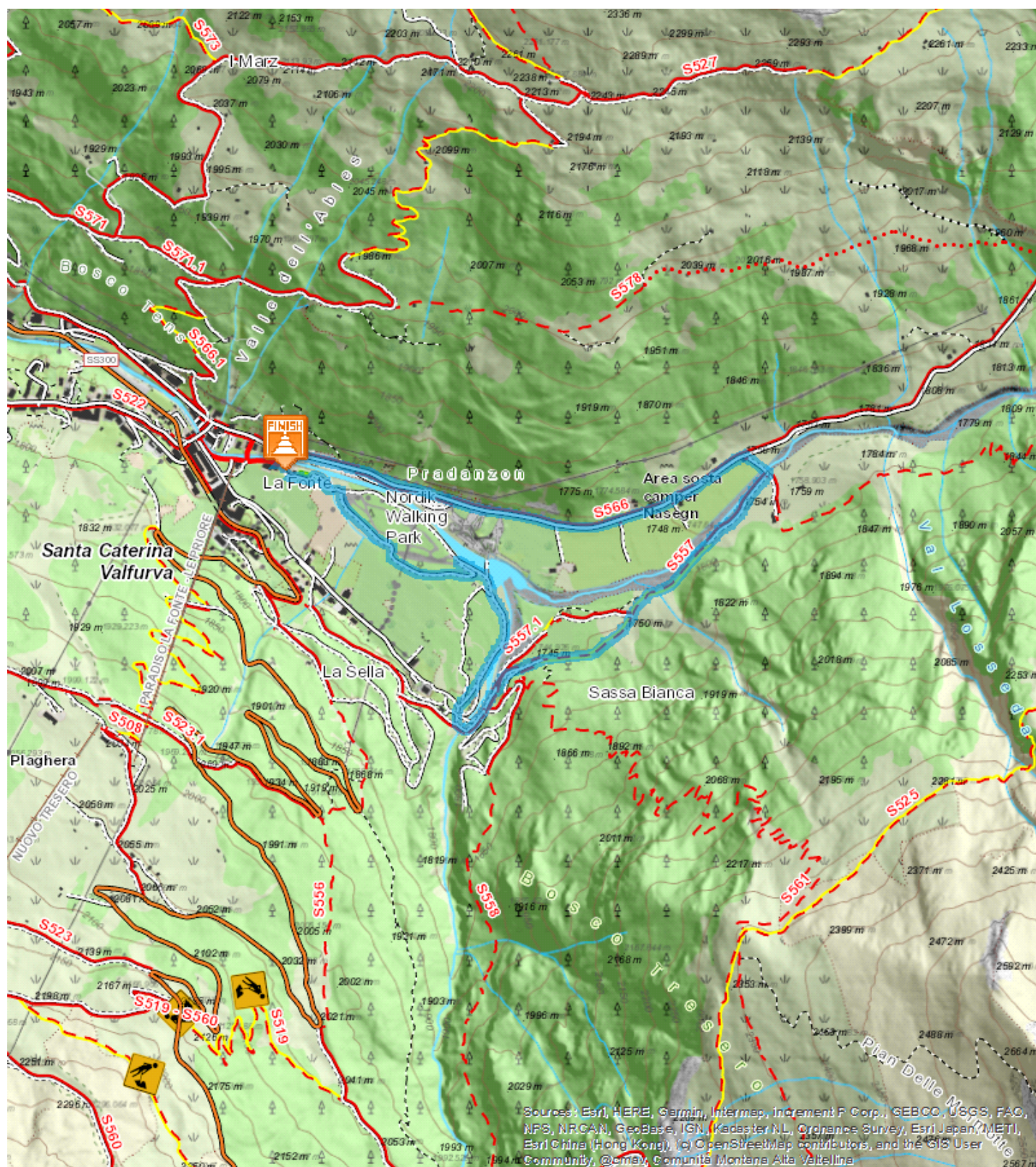


3,635 Km

 00:56 h

 33 m

 34 m



The Parco Isola route unfolds in beautiful flat pine forest bordered by the Frodolfo and Gavia streams. The shortest route is 1 kilometer but you can extend the tour by following the Gavia stream and going up the "tre ponti" route in the La Centrale and



Luseda area.



Isola Pineta is a large flat pine forest located by the Frodolfo and Gavia rivers. Within the pine forest and along the banks of the streams there are wide tracks suitable for all families. Here the lessons of the MTB school of Santa Caterina take place. Starting from the Bar La Fonte in Via Magliaga, walk along the external perimeter of the pine forest, following the paths inside the pine forest from La Centrale to La Fonte 2.5 km. Longer routes with a greater difference in height starting from the Centrale towards the locality of La Sella and a tour of the "three bridges" to Luseda.

sdfgsd

Start:Bar La Fonte

Arrival:Bar La Fonte

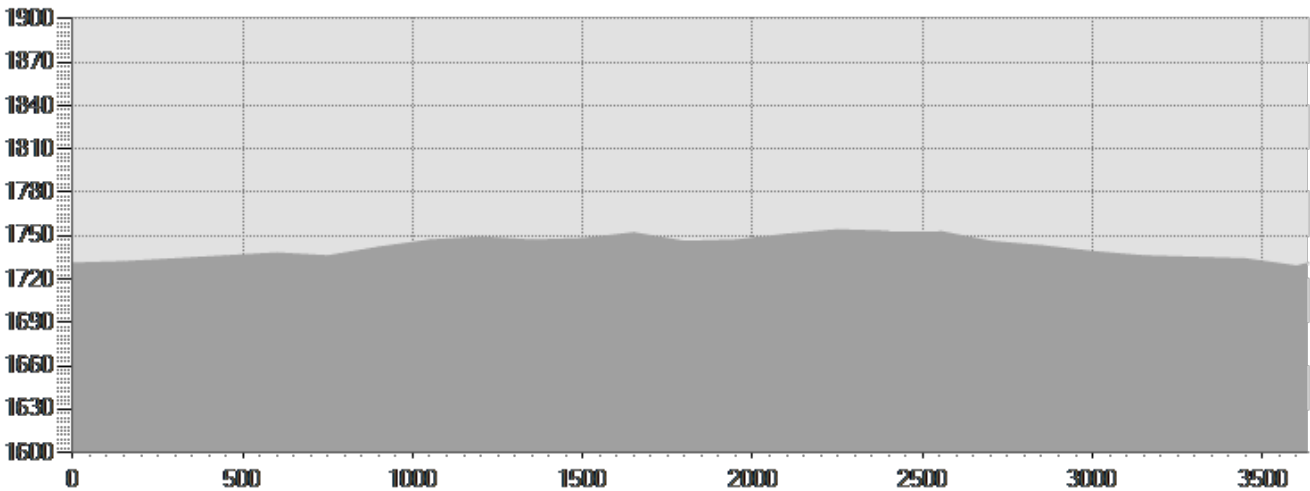
Equipment required:

Difficulty description:

Parking Area:

Map:

Author:



TECHNICAL DATA

Length	3,635 Km	Skill	☆☆☆☆☆
Duration	00:56 h	Condition	☆☆☆☆☆
Uphill height difference	33 m	Effort	☆☆☆☆☆
height difference downhill	34 m	Natural pavement	65%
Maximum slope uphill	4%	Asphalt pavement	35%
Maximum slope downhill	4%	Cobblestones	0%
Minimum and maximum quota	1755 m	Equipped trail	0%
	1730 m	Scree pavement	0%
		Other types of pavements	0%
Period Journey	Maggio - Novembre	Not available data	0%

PHOTO GALLERY



Pineta Parco Isola



Parco Isola





Parco Giochi Parco Isola



La Centrale





Parco isola

*This publication is for information purposes only. We recommend you consult and check the weather forecast and snow conditions before every excursion.*