

Easy



7,352 Km



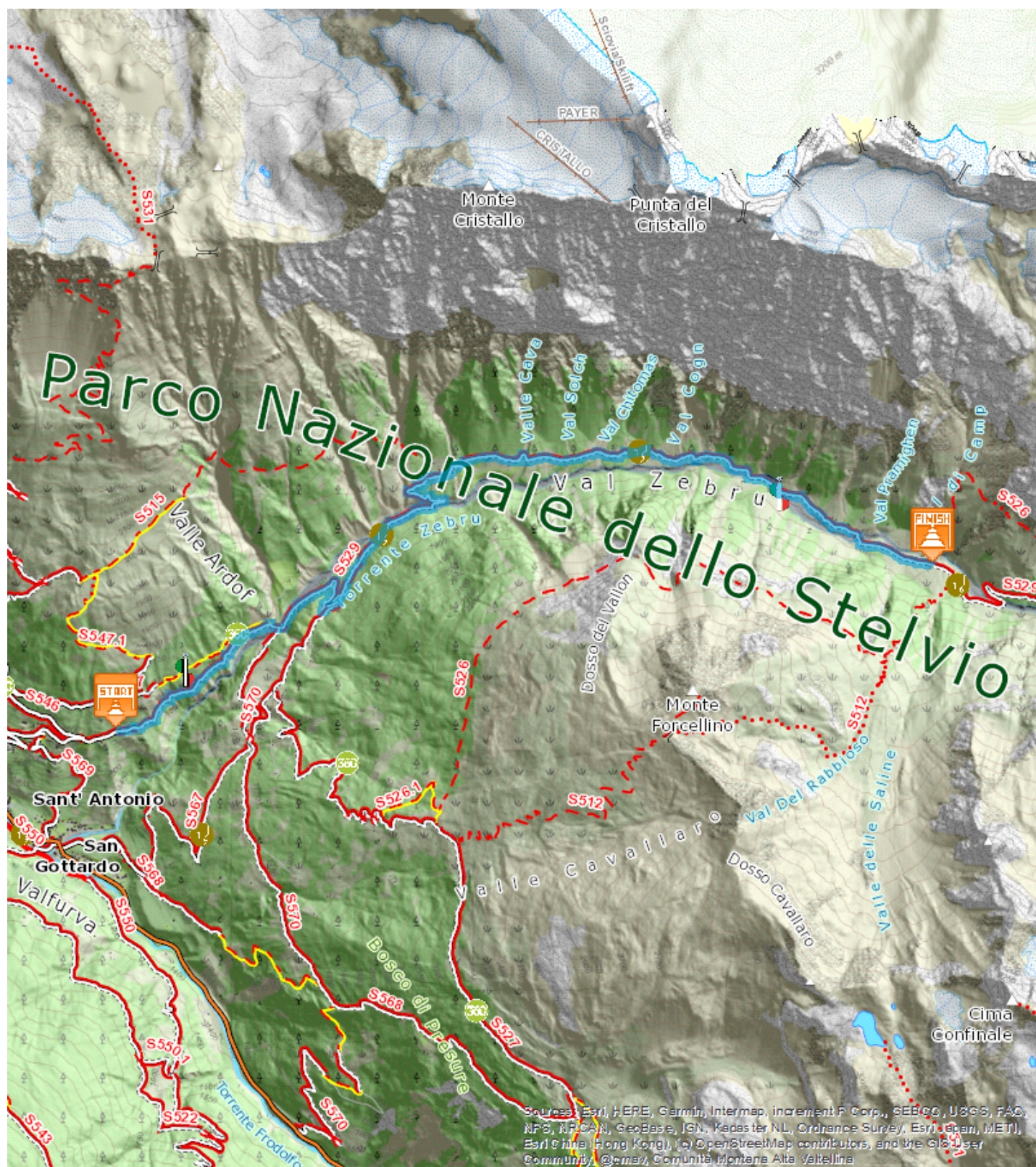
2:00 - 3:00  
h



417 m



30 m





Start:Niblogo

Arrival:Rifugio Campo

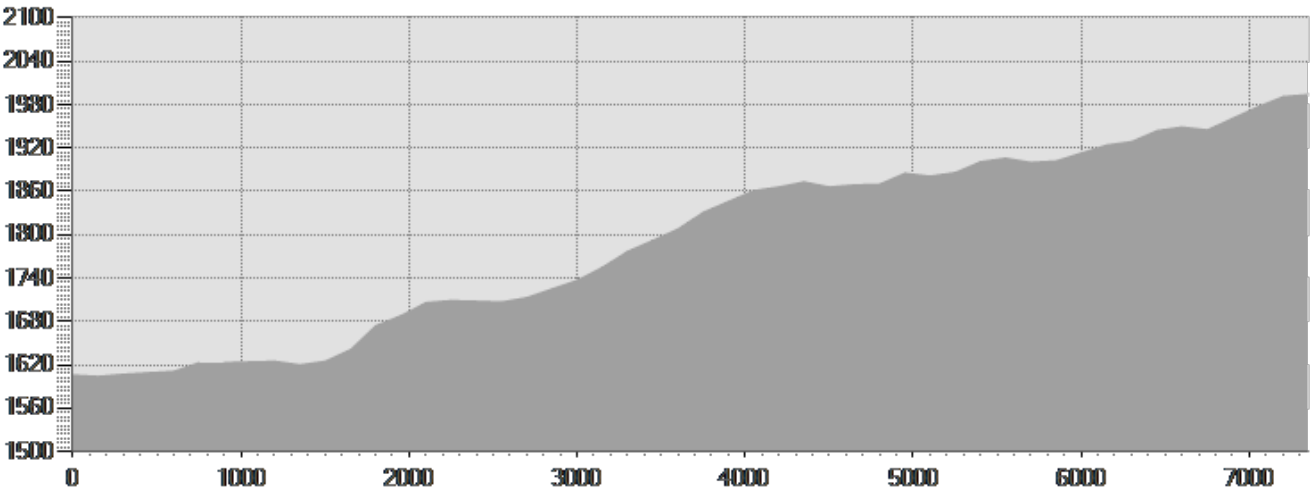
Equipment required:

Difficulty description:

Parking Area:Niblogo

Map:

Author:



TECHNICAL DATA

Length	7,352 Km	Skill	-
Duration	2:00 - 3:00 h	Condition	-
Uphill height difference	417 m	Effort	-
height difference downhill	30 m	Natural pavement	97%
Maximum slope uphill	21%	Asphalt pavement	3%
Maximum slope downhill	5%	Cobblestones	0%
Minimum and maximum quota	1994 m	Equipped trail	0%
	1604 m	Scree pavement	0%
		Other types of pavements	0%
Period Journey	Giugno - Settembre	Not available data	0%

PHOTO GALLERY





Val Zebbru'

*This publication is for information purposes only. We recommend you consult and check the weather forecast and snow conditions before every excursion.*