



Alpe Solaz - Strada militare Ables con joelette

Easy



4,604 Km



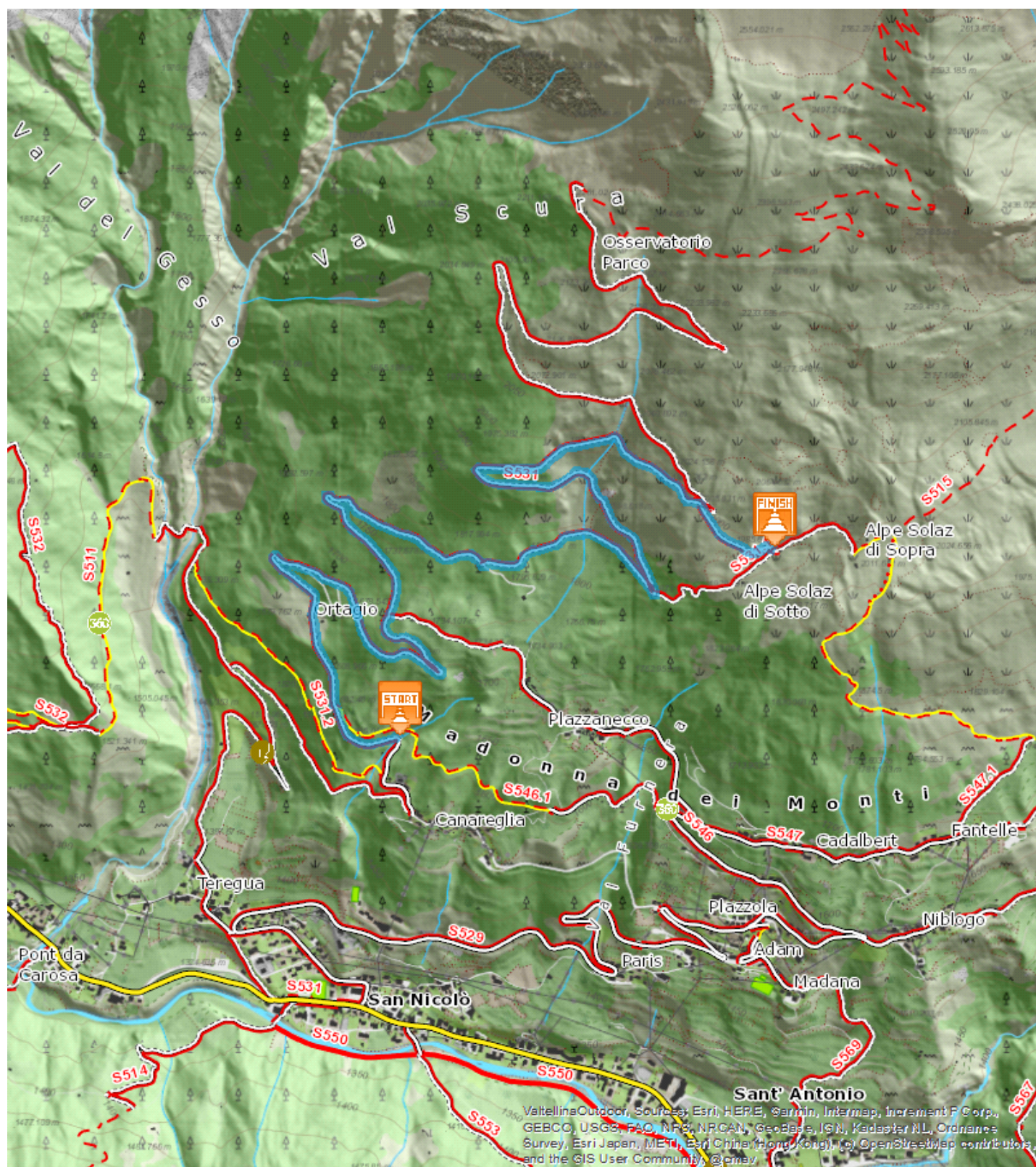
1:00 - 2:00
h



417 m



21 m





Start: Arrival:

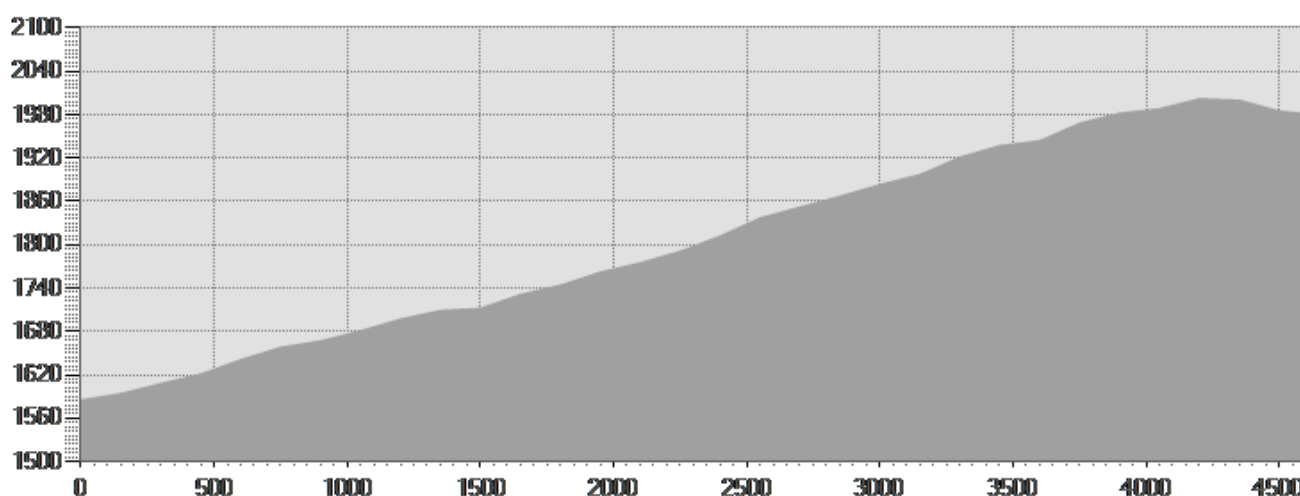
Equipment required:

Difficulty description:

Parking Area:

Map:

Author:



TECHNICAL DATA

Length	— 4,604 Km	Skill	—
Duration	🕒 1:00 - 2:00 h	Condition	—
Uphill height difference	⬆️ 417 m	Effort	—
height difference downhill	⬆️ 21 m	Natural pavement	100%
Maximum slope uphill	⬆️ 16%	Asphalt pavement	0%
Maximum slope downhill	⬆️ 10%	Cobblestones	0%
Minimum and maximum quota	🏔️ 2002 m	Equipped trail	0%
		Scree pavement	0%
		Other types of pavements	0%
		Not available data	0%
Period Journey	Giugno - Settembre		

PHOTO GALLERY



Strada militare

This publication is for information purposes only. We recommend you consult and check the weather forecast and snow conditions before every excursion.